



RPA 15

2021



Regional

Trails



Plan

July 2021

Prepared by the Area 15 Regional Planning Commission
P.O. Box 1110
Ottumwa, IA 52501
(641) 684-6551

This plan was prepared with funding from the U.S. Department of Transportation's Federal Highway Administration and Federal Transit Administration, and in part through local matching funds of the RPA member governments.

Adopting Resolution

A RESOLUTION ADOPTING THE RPA 15 REGIONAL TRAILS PLAN AS THE OFFICIAL TRAILS PLAN FOR REGIONAL PLANNING AFFILIATION 15

WHEREAS, the Area 15 Regional Planning Commission prepared a Regional Trails Plan which identifies the existing and proposed trails for REGIONAL PLANNING AFFILIATION 15; and

WHEREAS, it is a requirement of the Moving Ahead for Progress in the 21st Century (MAP-21) of 2012 that the transportation planning process and long-range planning be continued, and that bicycle and pedestrian planning be included in this process;

NOW, THEREFORE, BE IT RESOLVED that REGIONAL PLANNING AFFILIATION 15 adopts the RPA 15 Regional Trails Plan as the official trails plan for the region.

Passed this _____ day of _____, 2021.

Chairperson
Regional Planning Affiliation 15

Acknowledgements

Stephen Pedrick – Jefferson County Trails

Frank Broz – Jefferson County Trails

Shawn Morrissey – Jefferson County Conservation

Melanie Carlson – City of Fairfield

Andrew McGuire – Keokuk County Engineer

Curtis Reighard – Keokuk County Conservation

Sherry Vavra – Mahaska Community Recreation Foundation

Dave Sedivec – Mahaska County Conservation

Kim Steele Blair – Van Buren County Trails Association

Carroll Michalek – Van Buren County Trails Association

Richard Daugherty – Van Buren County Conservation

Sarah Wenke – Wapello County Trails Council

Kim Hellige – Wapello County Trails Council

Donna Jeffrey – Eldon Trails

Rick Tebbs – Wapello County Conservation

Ashley Utt – Pathfinders Resource Conservation and Development

Chris Kukla – Area 15 Regional Planning Commission

Table of Contents

Section One: Introduction and Overview	1
Why a Regional Trails Plan?	1
Goals of the Regional Trails Plan	1
A Brief History of Trails	1
Summary of Recent Trail Developments	3
Development of the Trails Plan	4
Section Two: Trails in Jefferson County	5
Existing Trails	6
Parks on the Trail System	8
Future Improvements	9
Section Three: Trails in Keokuk County	13
Existing Trails	13
Parks on the Trail System	14
Future Improvements	15
Section Four: Trails in Mahaska County	17
Existing Trails	18
Parks on the Trail System	19
Future Improvements	21
Section Five: Trails in Van Buren County	24
Existing Trails	25
Parks on the Trail System	27
Future Improvements	29
Section Six: Trails in Wapello County	32
Existing Trails	33
Parks on the Trail System	34
Future Improvements	36
Section Seven: Regional Trails and Connections	45
Existing and Planned Regional Trails in RPA 15	45
Future Connections	47
Section Eight: Priorities and Strategies for Future Investment	49
Section Nine: Grants for Trails	51
Federal and State Transportation Grants	51
Other Federal and State Grants	52
Local and Private Organization Grants	52

Section One: Introduction and Overview

Why a Regional Trails Plan?

The Regional Trails Plan is a document prepared by the Area 15 Regional Planning Commission for Regional Planning Affiliation 15 (RPA 15) with funding provided by the Iowa Department of Transportation, Federal Highway Administration and Federal Transit Administration. This plan covers five counties in southeast Iowa (Jefferson, Keokuk, Mahaska, Van Buren and Wapello) and serves as a supplement to the 2014 RPA 15 Long-Range Transportation Plan. It is designed to promote coordinated and joint planning for trails that improves recreation opportunities and transportation networks.

This plan provides an inventory of the existing and proposed trails and discusses other geographic features relating to trails such as; parks, recreation areas, and scenic areas. The plan incorporates local plans and identifies issues related to future trails. It documents the goals and objectives for future investment and development by the RPA's Technical Advisory Committee and Policy Board. The plan also identifies funding sources to assist cities and counties with trail development. The trails plan will be updated every five years in order to stay current with the growing and changing trail systems. During the years between updates, the RPA's GIS information on trails will be updated as needed. This will enable the RPA to stay up to date with local trail planning efforts.

Goals of the Regional Trails Plan

1. Improve recreation opportunities and transportation networks.
2. Increase coordination between jurisdictions in trail planning.
3. Create awareness of existing trail systems and proposed trail projects.
4. Promote regional trail linkage.
5. Provide justification for future trail investments.
6. Guide the investment of regional Transportation Alternative Program funds.

A Brief History of Trails

Trails became important early in the history of the United States for transportation. This was before roads and railroads were widely developed and the other major mode of transportation was water. Away from the coast, water transportation was limited to rivers and canals and trails were very important for transportation within the interior of the U.S. Several important routes ran through the area that is now the State of Iowa, these include: the Lewis and Clark Trail, Oregon Trail, and the Mormon Trail. In the early 1800's

Meriwether Lewis and William Clark led an expedition to explore from the Mississippi River west to the Pacific Ocean. This route included a stop in the present day location of Council Bluffs and became known as the Lewis and Clark Trail. The Oregon Trail was the route used by farmers and missionaries in the 1830s to travel from the towns on the Missouri River to Oregon Country. In the mid 1840's members of the Church of Latter-Day Saints sought to relocate to the present location of Salt Lake City to practice their religion without persecution. This route started in Nauvoo, Illinois, ran through Iowa on the journey to Salt Lake, included the establishment of several villages, and became the Mormon Trail.

The use of trails for transportation continued through the next several decades and interest in trail development grew as bicycles became widely available by 1890. As people took to bicycles, there were few roads and they were generally in poor condition, so the idea of building bicycle paths became popular. These paths were similar to recreational trails in that they connected cities, recreation areas and attractions. Ideas for expanding the network of bicycle paths included building them along railroads and roads. While the railroads were not interested, hard surfaced paths were developed alongside existing roads. During this time period, the Good Roads Movement occurred, which advocated the construction of paved roads with tax dollars to connect cities and promote development in rural areas. Bicycle enthusiasts became early advocates of this movement as they saw the benefit of paved rural roads for bicycles. In the beginning of the 1900's, interest in the bicycle for transportation decreased as automobiles came into greater use. At the same time, the advocacy for road improvements was taken over by automobile supporters.

Bicycling saw a resurgence in the late 1960's and early 70's in the U.S. as Americans saw it as a way to exercise and as an energy efficient alternative mode of transportation. However as numerous automobiles were now on U.S. roads, separate trails were now preferred. Also during the 1960's the railroads began closing and selling off lines that were not being used or generating enough revenue. Governments and private organizations saw the possibilities of using these corridors for trails that would provide transportation, recreation, tourism, and improve quality of life. The first rail to trail conversion was the Elroy-Sparta State Trail in Wisconsin. In 1976 the idea of converting abandoned rail lines to trails was formalized with the passage of the Railroad Revitalization and Regulatory Reform Act. This act established the Rails-to-Trails Grant program and provided funding and assistance to preserve rail corridors and build trails. The development of recreation trails was further assisted in 1991 with the passage of the Intermodal Surface Transportation Efficiency Act, which provided federal funding to cities, counties and states for trail construction.

Iowa currently has 1,980 miles of multi-use trails, which includes 806 miles of trails that use abandoned rail lines. This ranks Iowa 8th among the states in rail-to-trail mileage. RPA 15 has 69.55 miles of multi-use trails in five counties, which is three percent of the state's total mileage.

Summary of Recent Trail Developments

The following trail developments have been completed in the region during the last five years:

Jefferson County:

- Replaced surface of segment between Lamson Woods and Glasgow Road
- Replaced segment near National Guard.
- Installation of bike maintenance station and three benches.
- Artistic enhancements removed, powder coated and reinstalled.
- Brickwork leading to bridge removed leveled and replaced.
- Kiosks refinished and stained.
- New reflective tape on bollards.
- Installation of 10 directional and safety signs to the trail.
- Extension of the community trail from 9th Street in University Park to Burlington Road.
- Planted native prairie grass and installed identification signage.
- Installed one bench near the high school.

Van Buren County:

- Keosauqua Riverfront Trail.
- Loop to Loop Trail.
- Sunset Trail.

Keokuk County:

- Belva Deer Area Recreation Trail.

Mahaska County:

- Completion of trailheads at the Lacey Recreation Complex and Caldwell Park.
- Addition of a walkway into the Gazebo and parking at the Gazebo trailhead on Hwy 92.

Wapello County:

- Extension of the Eldon Gothic Trail 1900 feet along the Pond at the Fairgrounds.
- Constructed a Shelter along the Eldon Gothic Trail at the Boat Ramp.

Updating the Trails Plan

The process to update the regional trails plan for RPA 15 for RPA began in January of 2020. This process a review of the existing trails plan and obtaining new information from stakeholders within the region through surveys and individual discussions. Information from stakeholders was reviewed to determine projects that have been completed and identify future projects, this allowed RPA staff to update relevant sections of the plan and maps. Upon completion of the draft plan, the document was made available to stakeholders and the RPA's Technical Advisory Committee in November of 2020 for review and comment. Revisions were then made to the plan based on the feedback received. After revisions were completed, the plan was made available again to the stakeholders and TAC as well as the public for review and comment. Public comments were solicited through legal notice and informational releases in the newspaper and on Facebook. At the end of the thirty day public comment period, the plan was presented to the RPA Policy Board for adoption after consideration of the comments received. The next regular update to the regional trails plan will be in 2026.

Section Two: Trails in Jefferson County

According to the US Census Bureau, in 2018 Jefferson County had an estimated population of 18,381. Fairfield is the county seat and largest city, with an estimated population of 10,414. In addition to Fairfield, there are six other smaller cities within the county. Jefferson County's geography is rural consisting of farmlands with scattered woodlands. The Skunk River runs through the northeastern corner of the county. There are no other large rivers or natural lakes in Jefferson County.

The Jefferson County Trails Council was formed in 1997 with the assistance of the County Conservation Board. The original goal of the group was to extend the Jefferson County Park trail to Libertyville along the abandoned Rock Island rail line. A section from the park to Cedar Creek was acquired and converted into a trail, and a regional enhancement grant was obtained for constructing a bridge over the creek. The Cedar View Trail Bridge was completed in 2002. While construction of the bridge and the Cedar View Trail were taking place, the trails council developed a plan for a loop trail around Fairfield, with "feeder" trails running from the loop trail into the city. The Fairfield Loop Trail was constructed in sections; the first section constructed in 1999 and the most recent in 2013. There are also five designated and signed bikeways/walkways in Fairfield, which connect the city's neighborhoods to the loop trail.

For more information:

Jefferson County Trails Council.

www.jeffersoncountytrails.org
comments@jeffersoncountytrails.org

Jefferson County Conservation Board.

www.jeffersoncountyconservation.com
jeffersonccb@lisco.com
 (641) 472-4421

Fairfield Parks and Recreation.

cityoffairfieldiowa.com/249/Parks-Recreation
 (641) 472-6159

Regional Transportation Enhancement and Transportation Alternative Program awards:

2001	Cedar View Trail - \$28,000
2002	Cedar View Trail - \$358,600
2003	Louden (BNSF) Bridge - \$282,951
2007	Matkin (Hwy 1) Bridge - \$125,000
2010	Loop Trail NW segment - \$136,516
2020-2	Hwy 1 Trail and sidewalk - \$320,000 (Filmore Av to Libertyville Rd)

Existing Trails

Fairfield Loop Trail:

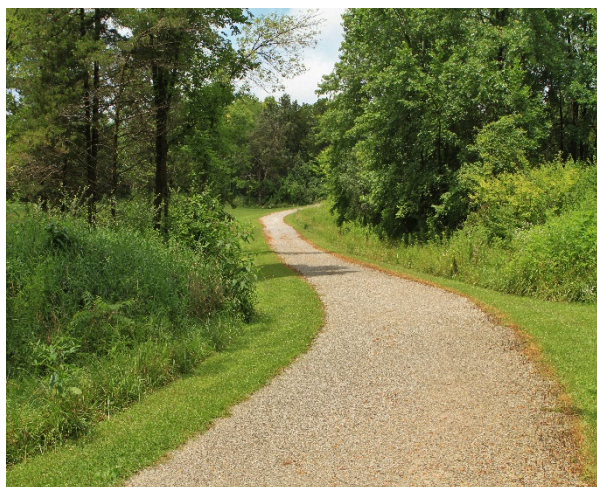
- Maintained by: City of Fairfield and the Jefferson County Conservation Board.
- Length: 15.9 miles.
- Surface type: Most of the trail is crushed limestone, there are several paved segments and one section of gravel shared roadway.
- Notable features: Maasdam Barns, Judy Bales Art, Matkin Bridge, Loudon Bridge and Crow Creek.
- Connections: Jefferson County Health Center Trail, Cedar View Trail (Jefferson County Park), Witham Woods, Waterworks Park, Chautauqua Park, Lamson Woods and Neff Wetlands.



Railroad crossing maze safety enhancement along 28th Street. Crossing maze incorporates Judy Bales Art.



Matkin Bridge over Highway 1 north of Fairfield. This bridge project received \$125,000 in Regional Enhancement funds from the RPA.



Fairfield Loop Trail passing through Witham Woods. The woods are located on the west side of Fairfield along Burlington Ave.

Cedar View Trail:

- Maintained by: Jefferson County Conservation Board.
- Length: 4.4 miles.
- Surface type: 1.4 miles crushed limestone, 3.0 miles dirt, gravel, or concrete shared roadway.
- Notable Features: Judy Bales Art, bridge over Cedar Creek, Bridge over US 34 bypass
- Connections: Jefferson County Park, Fairfield Loop Trail, Cedar Creek Wetlands, Cedar Creek Timber, City of Fairfield and the City of Libertyville.



The Cedar View Trail makes use of the former Rock Island Railroad rail bed and connects Fairfield to Libertyville.

Jefferson County Health Center Trail:

- Maintained by: Jefferson County Health Center.
- Length: 0.9 miles.
- Surface type: Crushed limestone.
- Notable features: Exercise stations.
- Connections: Fairfield Loop Trail.

Skunk River Water Trail:

- Maintained by: Jefferson County Conservation Board.
- Length: 10.5 miles in Jefferson County.
- Access points: Coppock Access and MacCoon Access.



This bridge on the Cedar View Trail is 376' long and spans Cedar Creek. It uses the abutments from an old railroad bridge.

Cedar Creek Water Trail:

- Maintained by: Jefferson County Conservation Board.
- Length: 6 miles.
- Access Points: Turkey Run Wildlife Area and Round Prairie Park.

Parks on the Trail System

Jefferson County Park:

- Maintained by: Jefferson County Conservation Board.
- Size: 227 acres.
- Amenities: Camping, picnic shelters, hiking/biking/cross country skiing trails, fishing ponds, nature center, playground equipment and baseball field.



Witham Woods:

- Maintained by: Jefferson County Conservation Board.
- Size: 133 acres.
- Amenities: Hiking/cross country skiing trails, fishing pond and historic railroad.



Waterworks Park:

- Maintained by: City of Fairfield.
- Size: 97.2 acres.
- Amenities: Swimming beach, fishing, walking paths, playground equipment, picnic area and boat launch.



Chautauqua Park:

- Maintained by: City of Fairfield.
- Size: 28.7 acres.
- Amenities: Disc golf course, playground equipment, shelters, walking path, picnic areas.

Lamson Woods:

- Maintained by: City of Fairfield
- Size: 42.2 acres.
- Amenities: Walking path.

Many of the Parks around Fairfield, such as Witham Woods, are connected to the loop trail and also serve as trailheads.

Neff Wetlands:

- Maintained by: Jefferson County Conservation
- Size: 35 acres.
- Amenities: Walking path.

Cedar Creek Timber and Wetland:

- Maintained by: Jefferson County Conservation Board.
- Size: 275 acres.
- Amenities: Hiking/biking/cross country skiing trails, fishing in Cedar Creek and hunting.

Future Improvements

Trails:

- Trail and sidewalk along Hwy 1 from Fillmore Ave to loop trail.
- Designated bike lanes on or an alternative route to replace Burlington Ave as a shared roadway.
- Connecting to the Suburban Heights subdivision through Jefferson County Park.
- Separating the trail users on Mint Blvd from vehicle traffic.
- Mountain biking trails.
- Connecting to Pleasant Plain using abandoned railroad ROW.
- New standalone trail to Libertyville to replace the shared roadway.
- Connecting to the American Gothic Trail.
- Extend trail on east side of Hwy 1 to Makin Bridge and loop trail.



Cedar Creek Timber and Cedar Creek Wetland can be accessed from the Cedar View Trail.

- Connecting the sidewalks by the Law Center to the loop trail.

Trail Enhancements:

- Street lights at rural road crossings.
- Wayfaring signs on the trails.
- Public art and seating along the trails.
- More interpretive signs on the trails.
- More landscaping around trail kiosks.
- Drinking water available along the trail.
- Strategic clearings for birdwatchers.
- Bicycle maintenance stations.

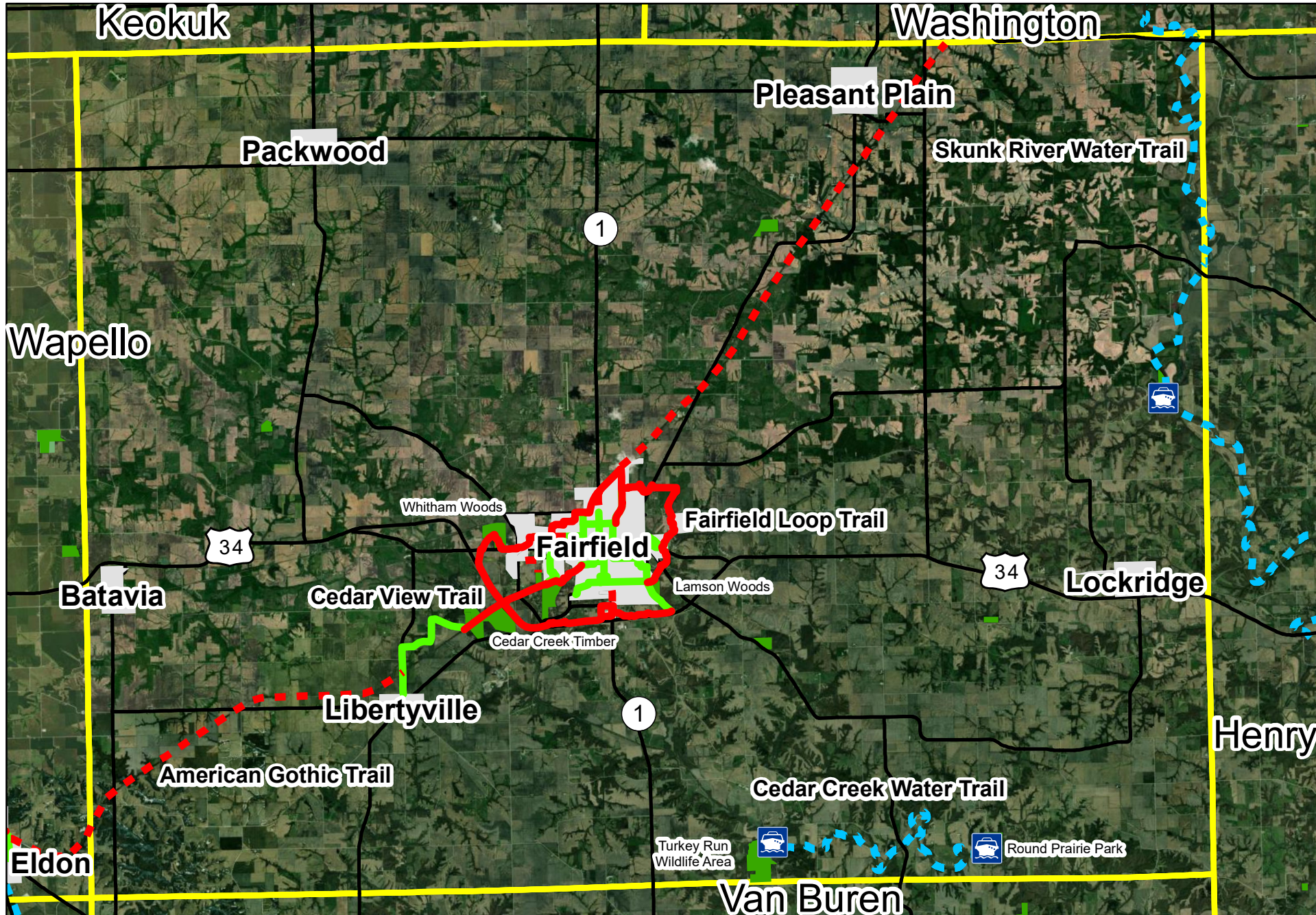
Other

- Developing a maintenance plan for Lamson Woods.



Mile markers are located every ¼ mile along the loop trail helping users identify distances.

Jefferson County Bicycle and Pedestrian Facilities



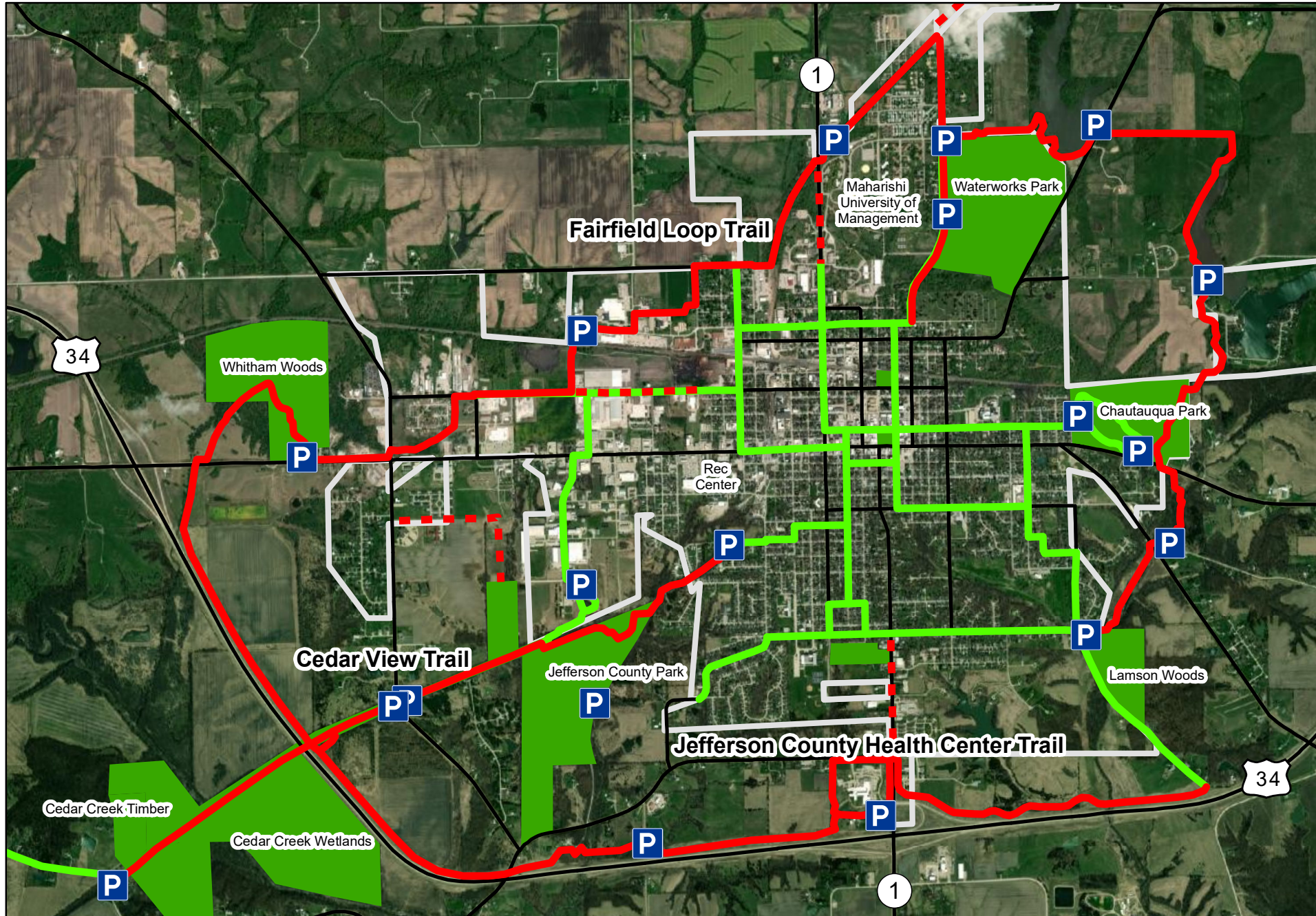
Legend

- Existing Trails
- - - Proposed Trails
- Signed Routes
- Cities
- Water trail access
- - - Water Trails
- Parks/Natural Areas
- Counties

Map prepared by the Area 15 Regional Planning Commission
 Sources: ESRI, Iowa DOT, Iowa DNR, Jefferson County Trails, Jefferson County Conservation.
 Date prepared: 10-28-20



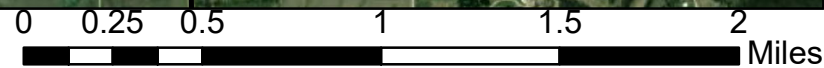
City of Fairfield Bicycle and Pedestrian Facilities



Legend

- Trailheads/Parking
- Existing Trails
- Proposed Trails
- Signed Routes
- Parks/Natural Areas
- Cities
- Counties

Map prepared by the Area 15 Regional Planning Commission
 Sources: ESRI, Iowa DOT, Iowa DNR, Jefferson County Trails, Jefferson County Conservation.
 Date prepared: 10-28-20



Section Three: Trails in Keokuk County

Keokuk County had an estimated 2018 population of 10,225 people according to the US Census Bureau. The county seat and largest city is Sigourney, which had a population of 2,015. The county is made up of fifteen other smaller cities in addition to Sigourney. The geography of the county is dominated by the Skunk River, both the North Skunk and South Skunk run west to east across the southern half of the county before combining to form a single river in the southeast quarter of the county.

Existing Trails

Belva Deer Recreation Area Trail

- Maintained by: Keokuk County Conservation Board.
- Length: 2.75 miles.
- Surface type: poured concrete.
- Connections: Belva Deer Recreation Area.

Kewash Trail:

- Maintained by: Washington County Conservation Board.
- Length: 14 miles.
- Surface type: crushed limestone.
- Notable features: scenic railroad corridor.
- Connections: City of Keota, City of West Chester and the City of Washington.

For more information:

Keokuk County Conservation Board.
www.keokukcountyia.com
kccb@cloudburst9.net
 (641) 622-3757

City of Sigourney.
sigourney-iowa.com
sigourneyclerk@iowatelecom.net
 (641) 622-3080

Regional Transportation Enhancement and Transportation Alternative Program awards:

- | | |
|------|--|
| 2017 | Belva Deer Recreation Area Trail Project - \$509,744 |
| 2019 | Belva Deer Recreation Area Trail Project - \$860,000 |



The Belva Deer Recreation Area is the largest park in Keokuk County and serves as a trailhead.

Skunk River Water Trail:

- Maintained by: Keokuk County Conservation Board.
- Length: 20 miles in Keokuk County.
- Access points: South Skunk River Access, Manhattan Bridge Access and Rubio Access.



Parks on the Trail System

Belva Deer Recreation Area:

- Maintained by: Keokuk County Conservation Board.
- Size: 1,669 acres.
- Amenities: hunting, camping, picnic shelters, hiking/horse trails, fishing ponds, 260 acre lake and beach.

The Kewash Trail runs east from Keota on an abandoned rail bed to Washington.

Yenruogis Park:

- Maintained by: Keokuk County Conservation Board.
- Size: 76 acres.
- Amenities: camping, picnic area, 10 acre lake and fishing.



A paved trail in Legion Park connects the parking area to the swimming pool.

Legion Park:

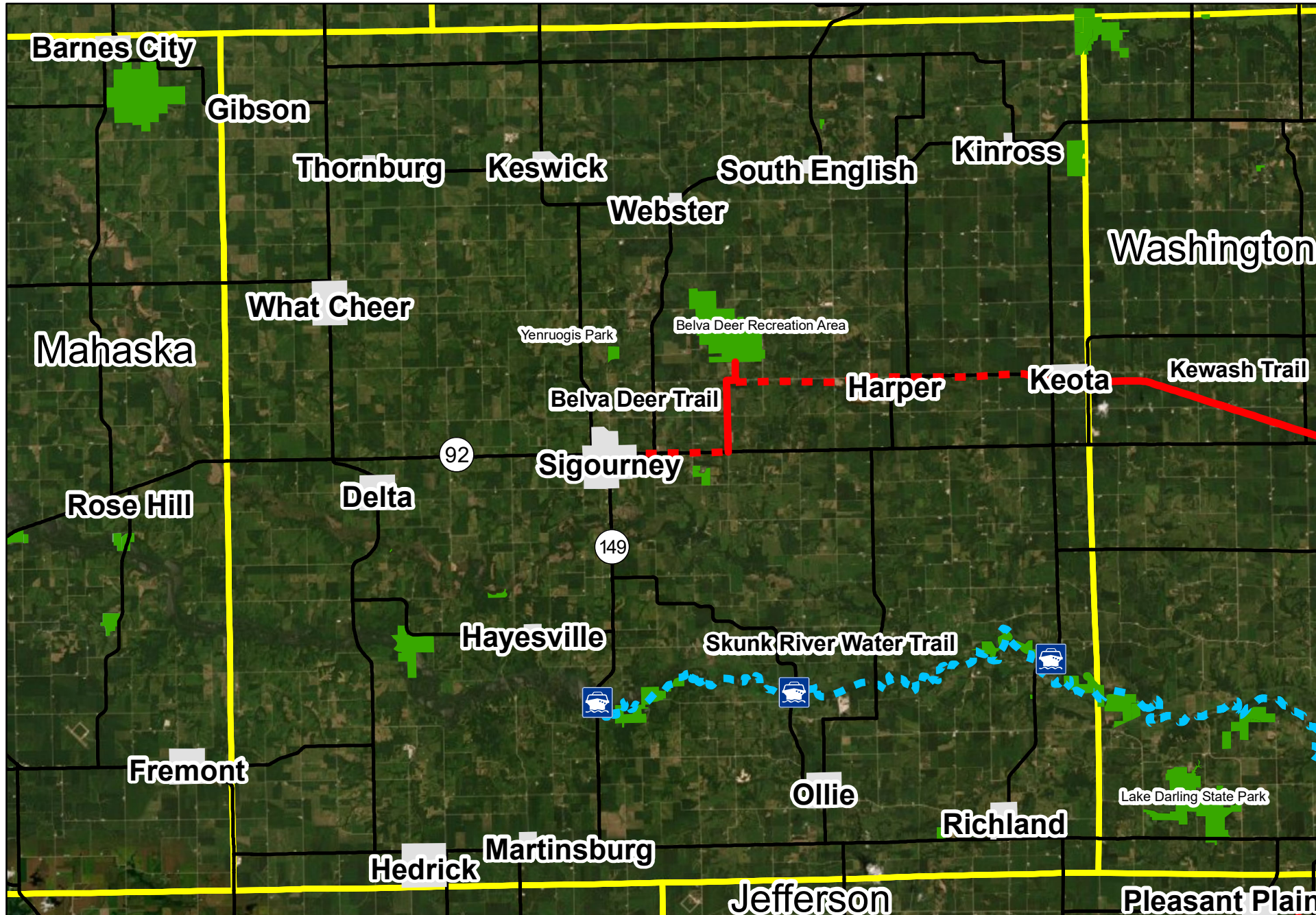
- Maintained by: City of Sigourney
- Size: 21 acres.
- Amenities: picnic shelters, playground, paved trail, swimming pool, horseshoe pits, basketball and tennis courts.

Future Improvements

Trails:

- Connecting the Belva Deer Trail to Sigourney and Legion Park.
- Connecting Sigourney to Yenruogis Park.
- Connecting the Belva Deer Trail to Keota and the Kewash Trail.
- Connecting Sigourney to Oskaloosa.
- Connecting Belva Deer to Lake Darling State Park.

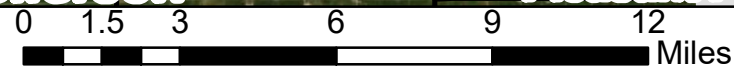
Keokuk County Bicycle and Pedestrian Facilities



Legend

- Existing Trails
- - - Proposed Trails
- Existing Sidepath
- Signed Routes
-  Water trail access
-  Cities
- - - Water Trails
-  Parks/Natural Areas
-  Counties

Map prepared by the Area 15 Regional Planning Commission
 Sources: ESRI, Iowa DOT, Iowa DNR, Keokuk County Secondary Roads, Keokuk County Conservation.
 Date prepared: 10-28-20



Section Four: Trails in Mahaska County

The 2018 US Census Bureau estimate for Mahaska County had a population of 22,000 and the largest city is Oskaloosa a population of 11,426. Oskaloosa is located in the center of the county and is also the county seat. Mahaska County includes eight other smaller cities. The most prominent geographical features of the county are its three rivers; the North Skunk, South Skunk, and the Des Moines.

The Mahaska Community Recreation Foundation (MCRF) and Mahaska County Conservation carry out trails planning within the county. MCRF was formed in 1998 with a mission to facilitate and promote recreation in Mahaska communities. The organization built their first segment of the Oskaloosa Loop trail in 1999. The MCRF is involved in developing the Community Recreation Trail, which is a loop trail around Oskaloosa, developing the Lacey Recreation Complex, and developing the Oskaloosa Urban Park, which includes a skate park, gazebo and basketball courts. The MCRF also partners with organizations in the community to sponsor events such as “Bike to Work” week and encourage riding and walking as part of the “Healthy State” initiative. As of the summer of 2020, 14 miles of the Community Recreation Trail are complete, the remaining mile to complete the loop through University Park and southeast Oskaloosa are planned for construction within the next five years.

For more information:

Mahaska Community Recreation Foundation.
www.mcrf.info
 (641) 672-2499

Mahaska County Conservation Board.
www.mahaskaconservation.com
 (641) 673-9327

City of Oskaloosa.
www.oskaloosaiowa.org
 (641) 673-9431

Regional Transportation Enhancement and Transportation Alternative Program awards:

2003	Hwy 63 South trail Underpass - \$158,919
2006	Eddyville Cemetery Road - \$85,008
2007	Hwy 63 North trail Underpass - \$229,218
2016	Oskaloosa Sidewalk Improvement Program - \$162,574

Existing Trails

Mahaska Community Recreation Trail:

- Maintained by: Mahaska Community Recreation Foundation and the City of Oskaloosa.
- Length: 14 miles.
- Surface type: Most of the trail is poured concrete, there are several paved shared roadway segments and one gravel shared roadway section.
- Notable features: Tram tours, underpasses (8) and Freedom Rock.
- Connections: Lacey Recreation Complex, T65 Bike Route, Caldwell Park, City of University Park, Edmundson Park and the T39 Bike Route.



A box culvert underpass for the trail under Highway 63 south of Oskaloosa provides a safe crossing for trail users.



Part of the Mahaska Community Recreation Trail on the east side of Oskaloosa, north of Highway 92.



Landscaping and seating enhance the trailhead located next to Bobzilla's Bicycle Werks on Pella Av.

T65 Bike Route:

- Maintained by: Mahaska County Secondary Road Department.
- Length: 9 miles.
- Surface type: Paved roadway.
- Notable features: Nelson Pioneer Farm and Museum.
- Connections: Mahaska Community Recreation Trail.



T39 Bike Route:

- Maintained by: Mahaska County Secondary Road Department.
- Length: 8 miles.
- Surface Type: Paved roadway.
- Connections: Mahaska Community Recreation Trail, City of Beacon and Eveland Access.

This unique space can be found at the center of the roundabout the trail passes under south of the Lacey Recreation Complex.

Parks on the Trail System

Lacey Recreation Complex:

- Maintained by: Mahaska Community Recreation Foundation.
- Size: 200 acres.
- Amenities: youth soccer fields, collegiate soccer fields, softball/baseball fields, Babe Ruth baseball fields, youth football fields and a collegiate stadium for football, soccer and track.



Caldwell Park:

- Maintained by: Mahaska County Conservation Board.
- Size: 60 acres.

The trail connects to Caldwell Park, where Mahaska County Conservation has built a new learning center.

Edmundson Park:

- Maintained by: City of Oskaloosa.
- Size: 60 acres.
- Amenities: Picnic area, shelters, pond, swimming pool, playground, slow pitch softball fields, disc golf course and dog park.



Hawthorn Wildlife Area:

- Maintained by: Iowa Department of Natural Resources.
- Size: 1,682 acres.
- Amenities: Hiking trails, 182 acre lake, boat ramp, fishing and hunting.



Russell Wildlife Area:

- Maintained by: Mahaska County Conservation Board.
- Size: 220 acres.
- Amenities: picnic area, hiking/cross country skiing/snow shoeing trails, nature center, fishing/boating ponds and hunting.



Lake Keomah State Park:

- Maintained by: Iowa Department of Natural Resources.
- Size: 373 acres.
- Amenities: Camping, picnic shelters, lodge, hiking/cross country skiing/snowmobiling trails, 78 acre lake, swimming beach, boat ramp, fishing and hunting.

The trail passes through Edmundson Park, located in the southwest part of Oskaloosa. This park provides space for active and passive recreation opportunities.

Future Improvements

Trails:

- Completing the Mahaska Community Recreation Trail segment between Burlington Road and Fox Run Drive.
- Connecting to Lake Keomah State Park.
- Connecting to the Russell Wildlife Area.
- Connecting to the Hawthorn Wildlife Area.
- Connecting to Keokuk County Trails.
- Construct a trail extension to 5th Avenue to provide neighborhood access.
- Construct a trail extension from the Gazebo trailhead to the new hotel.



Trail Enhancements:

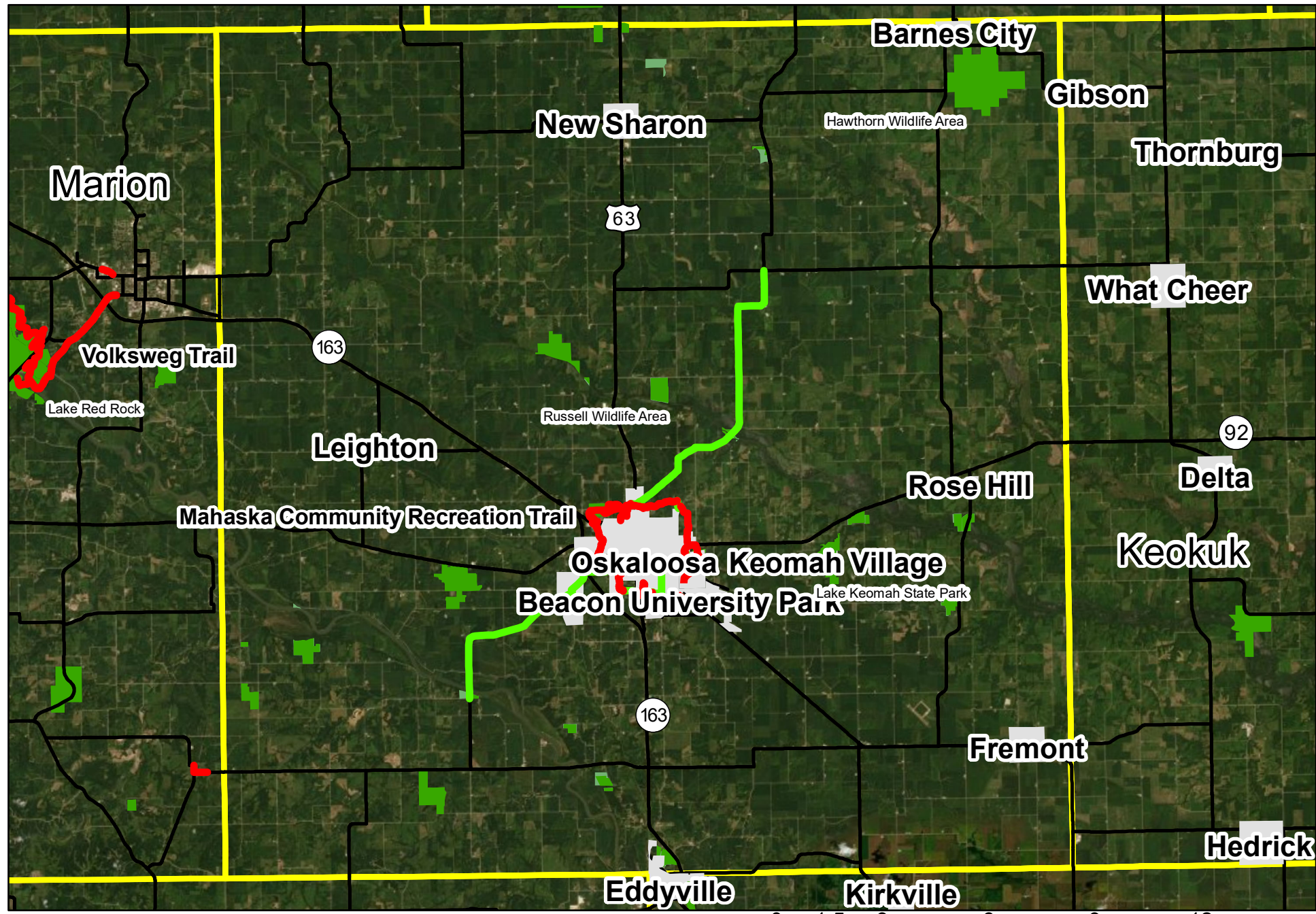
- Bike racks at destinations along the trail.
- Add at least one water fountain.

Roads that are wide enough may include bike lanes. Signs and pavement markings on South H Street are used to designate bike lanes.



Mile markers that include a mile number can help trail users identify their location on the trail.

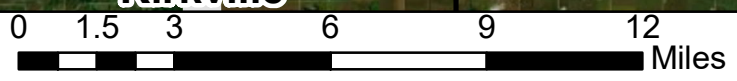
Mahaska County Bicycle and Pedestrian Facilities



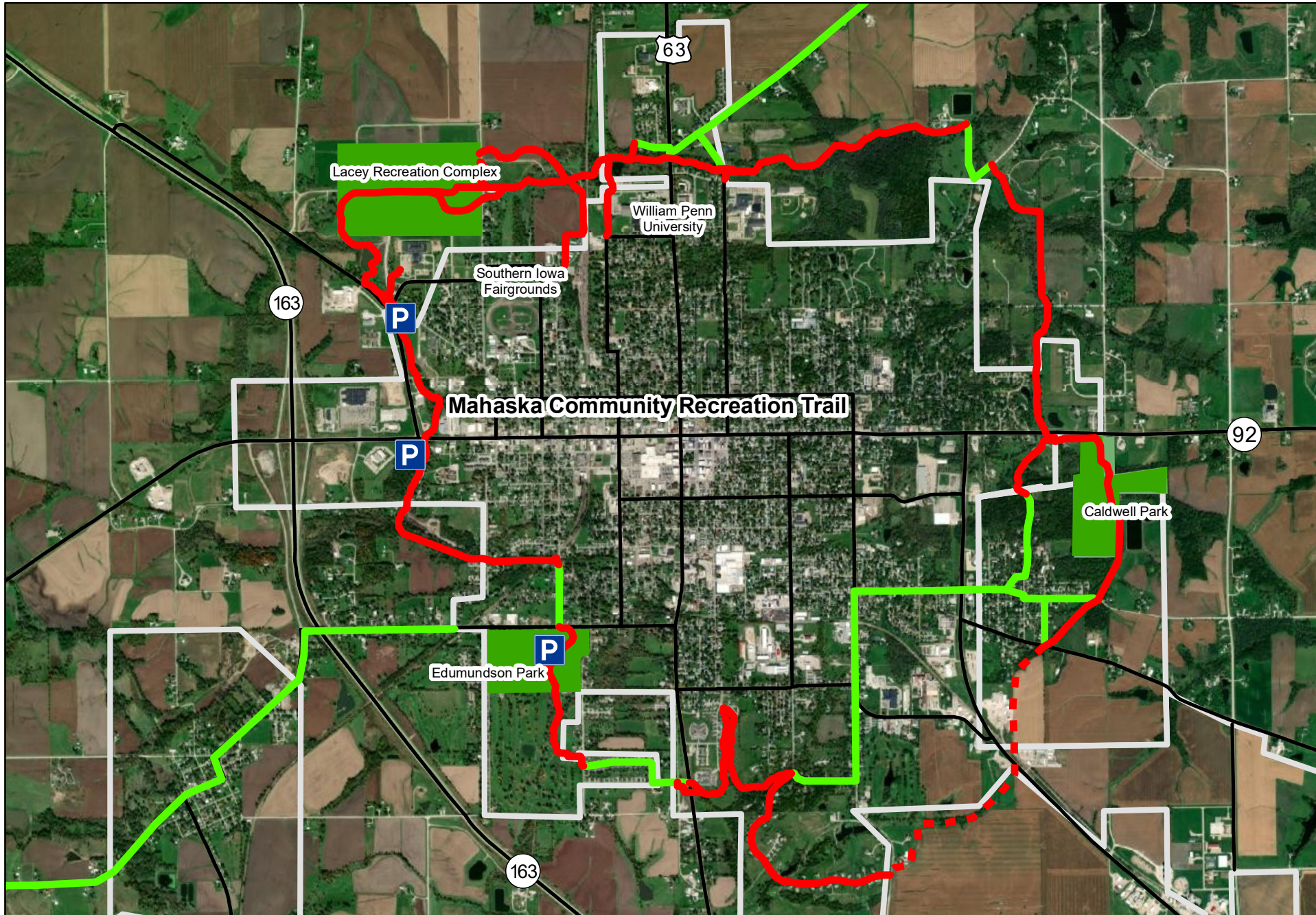
Legend

- Existing Trails
- - - Proposed Trails
- Signed Routes
- Cities
- Parks/Natural Areas
- Counties

Map prepared by the Area 15 Regional Planning Commission
 Sources: ESRI, Iowa DOT, Iowa DNR, Mahaska Community Recreation Foundation, Mahaska County Conservation.
 Date prepared: 10-30-20



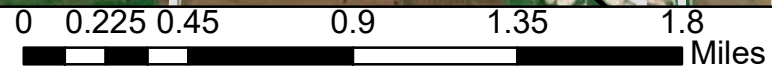
City of Oskaloosa Bicycle and Pedestrian Facilities



Legend

- Trailheads/Parking
- Existing Trails
- Proposed Trails
- Signed Routes
- Parks/Natural Areas
- Cities
- Counties

Map prepared by the Area 15 Regional Planning Commission
 Sources: ESRI, Iowa DOT, Iowa DNR, Mahaska Community Recreation Foundation, Mahaska County Conservation.
 Date prepared: 10-30-20



Section Five: Trails in Van Buren County

According to the US Census Bureau, Van Buren County had an estimated 2018 population of 7,020 people. Keosauqua is the county seat and largest city, with an estimated population of 906. In addition to Keosauqua, there are six other smaller cities within the county. All seven of the cities are collectively known as the Villages of Van Buren, and they celebrate their history and heritage by offering a mixture of natural beauty, historic architecture, and small shops. Van Buren County's topography consists of the Des Moines River valley and scattered woodlands. The Des Moines River runs from the northwest to the southeast through the center of the county. Other large and notable features include Lacey-Keosauqua State Park, Shimek State Forest and Lake Sugema.

The Van Buren County Trails Association was formed in January of 2002 and drafted a nine-point mission statement in order to further trail development in Van Buren County. This mission statement was created through cooperation from the committee members and several of the villages. Some of the points in this statement include: giving priority to trails that connect existing trails in the county and to trails in neighboring counties, develop trails that connect all the villages along with other historic or natural areas, use shared roadway trails only as a last resort when other types of trails are not practical, and when possible plan trails on county/state owned property or private property where an easement has been

For more information:

Van Buren County Trails Association.
<https://www.facebook.com/pages/Van-Buren-County-Trails-Association/192886144091157?fref=ts>

Van Buren County Conservation Board.
www.vbcountyconservation.com
vbccb@netins.com
 (319) 293-3589

City of Keosauqua.
citykeo@netins.net
 (319) 293-3536

Regional Transportation Enhancement and Transportation Alternative Program awards:

2003	Bentonsport Trail Bridge - \$62,707
2005	Keosauqua Loop Trail - \$148,000
2015	Keosauqua Riverfront Trail - \$240,000

given. In 2003, the association started work on the Des Moines River Water trail across the county using funds from the Van Buren Foundation and the Federal Recreational Trails Program. These funds were used by the trails association to construct boat ramps at access points.



Existing Trails

Keosauqua Loop Trail:

- Maintained by: City of Keosauqua.
- Length: 2 miles.
- Surface type: limestone chips, paved shared roadway and paved shoulders.
- Notable features: Scenic railroad corridor and small bridges.
- Connections: Keosauqua Bike Loop, Van Buren County Fairgrounds and Roberts Building Community Center.

Part of the Keosauqua Loop trail makes use of paved shoulders along Highway 1.

Keosauqua Riverfront Trail

- Maintained by: City of Keosauqua
- Length: 0.98
- Surface type: Concrete and paved shared roadway
- Connections: Keosauqua Loop Trail, Keosauqua Bike Loop and Riverfront Park.



Warning signs along Highway 1 alert drivers to locations where trail users may be crossing the road.

Waubonsie Trail:

- Maintained by: Cantril Grass Roots.
- Length: 1 mile.
- Surface type: Gravel.
- Notable features: Shelters and camping area.

Milton Loop Trail:

- Maintained by: City of Milton.
- Length: 1 mile.
- Surface type: Gravel.
- Notable features: Historic covered bridges.

Indian Lake Trail:

- Maintained by: City of Farmington.
- Length: 2 miles.
- Surface type: Gravel.
- Notable features: Indian Lake, totem pole, shelters and camping.

Lacey-Keosauqua Bike Loop:

- Maintained by: Van Buren County Secondary Road Department and the Iowa Department of Natural Resources.
- Length: 9.5 miles.
- Surface type: Paved roadway.
- Notable features: Des Moines River Bridges (2).
- Connections: Keosauqua Bike Loop, City of Keosauqua and Lacey-Keosauqua State Park.



Accommodations on the Des Moines River Bridge allow for bikes and pedestrians to safely cross between Keosauqua and Lacey Keosauqua State Park.



The Lacey-Keosauqua Bike Loop follows the park road.

Keosauqua Bike Loop:

- Maintained by: Van Buren County Secondary Road Department and the Iowa Department of Natural Resources.
- Length: 9.5 miles.
- Surface type: Paved roadway.
- Notable features: Des Moines River Bridges (2).
- Connections: Keosauqua Bike Loop, City of Keosauqua and Lacey-Keosauqua State Park.



Austin County Park is one of seven access points to the Des Moines River Water Trail in the county.

Lower Des Moines River Water Trail:

- Maintained by: Van Buren County Conservation Board and access point managers.
- Length: 41 miles in Van Buren County.
- Access Points: Shidepoke Ramp, Douds Access, Austin County Park, Keosauqua Ramp, Bentonsport Park Access, Bonaparte Access, Des Moines River Access and Farmington Access.



Parks on the Trail System

- Lacey-Keosauqua State Park:
- Maintained by: Iowa Department of Natural Resources.
- Size: 1,653 acres.
- Amenities: Picnic shelters, lodges, camping, cabins, hiking trails, 20 acre lake, swimming beach, fishing and boat ramp.



Amenities in Lacey-Keosauqua include hiking trails and picnic areas.

Shimek State Forest – Keosauqua unit:

- Maintained by: Iowa Department of Natural Resources.
- Size: 918 acres.
- Amenities: Hiking trails.

Lake Sugema:

- Maintained by: Van Buren County Conservation Board and the Iowa Department of Natural Resources.
- Size: 3,775 acres.
- Amenities: Camping, picnic area, playground, hiking trail, 574 acre lake, fishing and boat ramps.



Boat ramps at Lake Sugema provide access to the 574 acre lake for boating and fishing.

Waubonsie Park:

- Maintained by: Cantril Grass Roots.
- Size: 23 acres.
- Amenities: Camping, picnic shelters, playground, disc golf course, pond and bird watching station.

Indian Lake Park:

- Maintained by: City of Farmington.
- Size: 177 acres.
- Amenities: Camping, shelters, playground, stone lodge, cabins, 44 acre lake, fishing and boat ramp.

Future Improvements

Trails:

- Paving the mowed grass portion of the Riverfront Trail near the old Peacock ball fields.
- Connecting the planned baseball fields to the high school.

Trail Enhancements:

- A marked pedestrian crossing on Highway 1 by the Van Buren County Hospital.
- A marked pedestrian crossing on Highway 1 near City Park and Riverfront Park.
- Construction of accessible Gateway launch ramps and installation of riverfront landscape at Austin Park and Keosauqua on the Des Moines River Water Trail.
- Benches and maps along the trails.

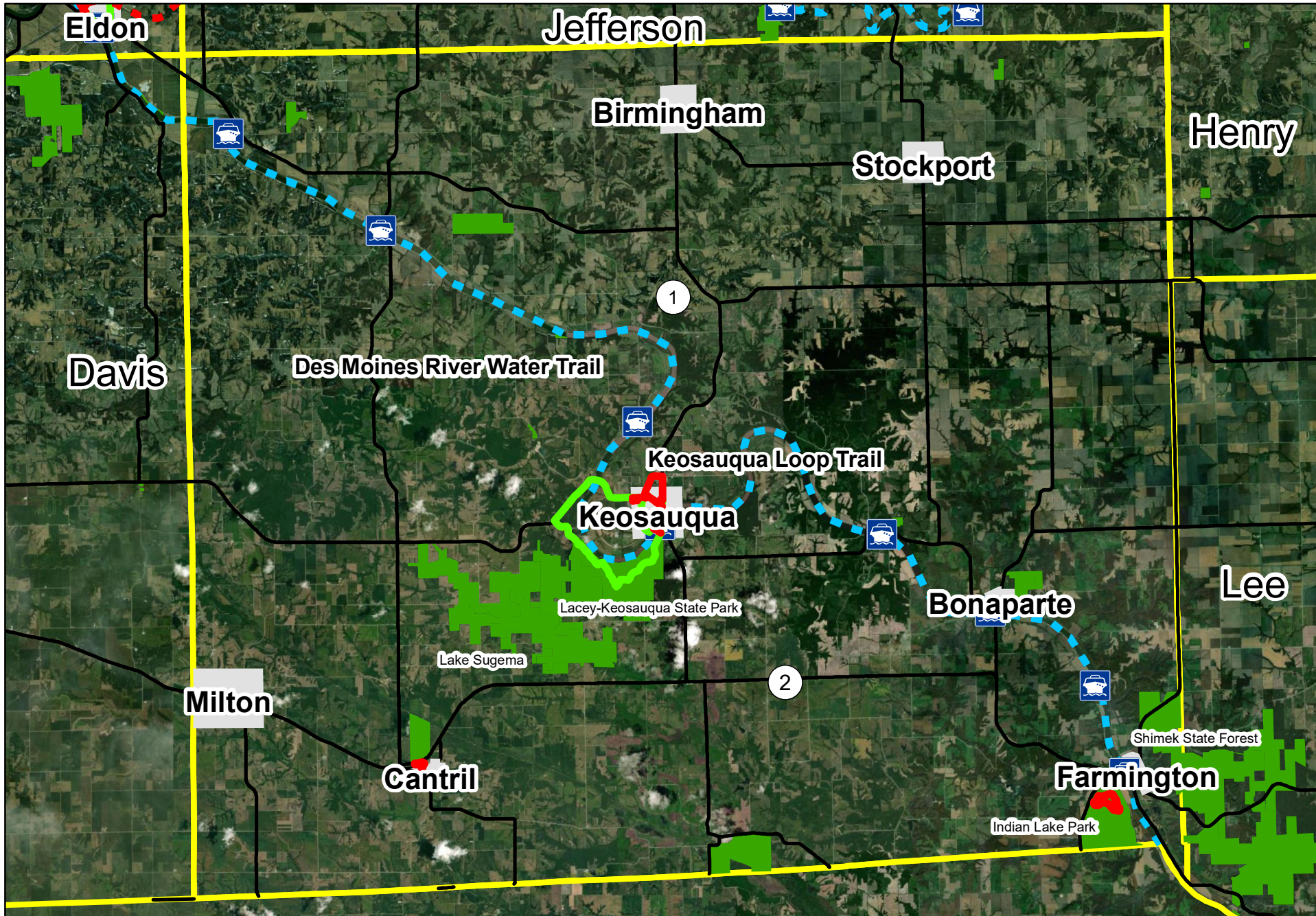


Maps located at the trailheads of the Keosauqua Loop Trail provide information to the user on the route.



The Riverfront Park is an open area in downtown Keosauqua along the Des Moines River and will include space for gatherings and events.

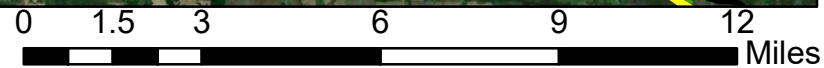
Van Buren County Bicycle and Pedestrian Facilities



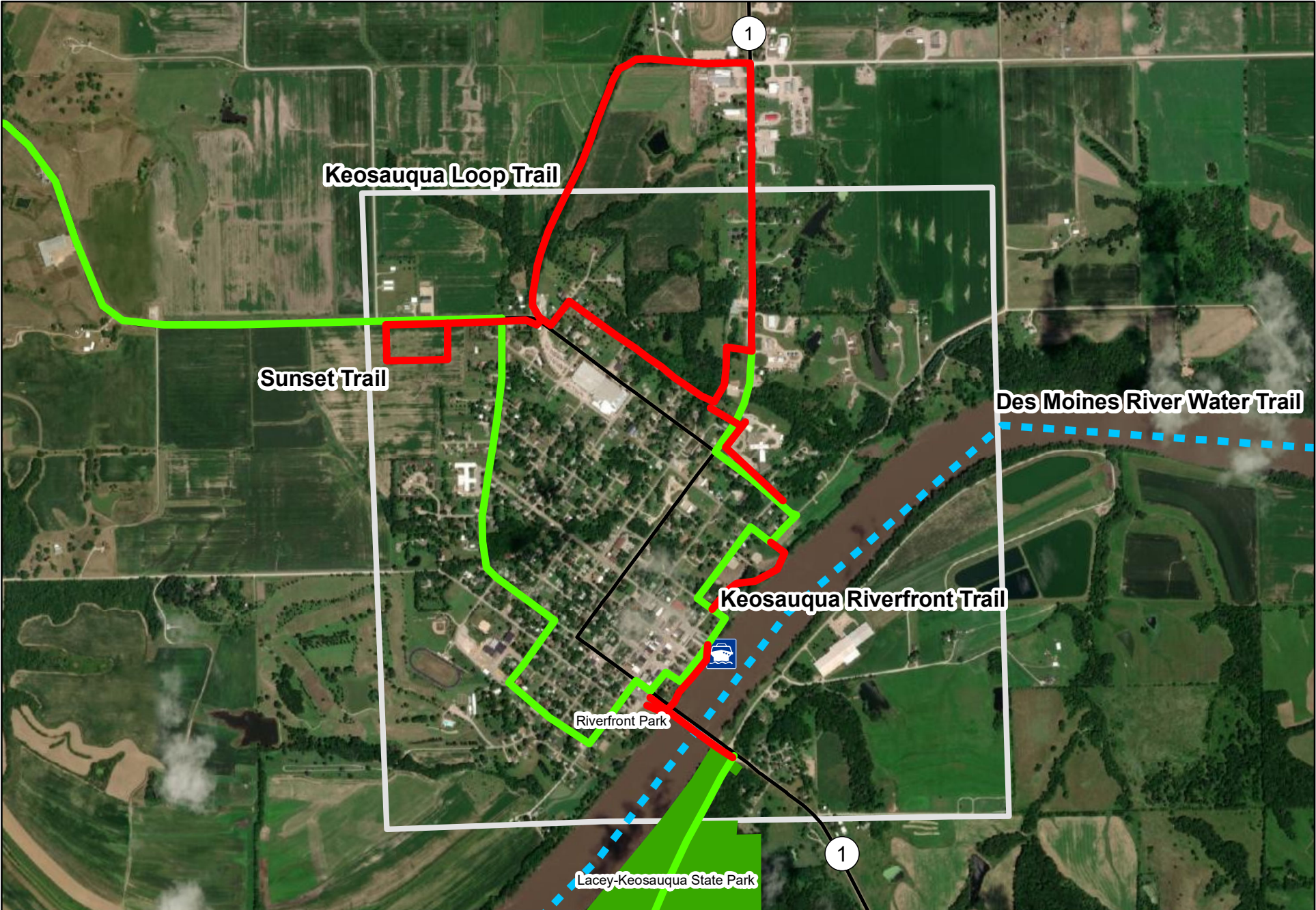
Legend

- Existing Trails
- - - Proposed Trails
- Existing Sidepath
- Signed Routes
-  Water trail access
-  Cities
- - - Water Trails
-  Parks/Natural Areas
- Counties

Map prepared by the Area 15 Regional Planning Commission
 Sources: ESRI, Iowa DOT, Iowa DNR, Van Buren County Trails Association, Van Buren County Conservation.
 Date prepared: 10-28-20



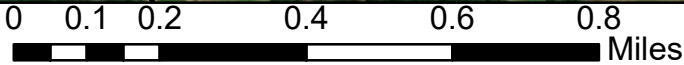
City of Keosauqua Bicycle and Pedestrian Facilities



Legend

- Existing Trails
- - - Proposed Trails
- Existing Sidepath
- Signed Routes
- Water trail access
- - - Water Trails
- Parks/Natural Areas
- Cities
- Counties

Map prepared by the Area 15
Regional Planning
Commission
Sources: ESRI, Iowa DOT,
Iowa DNR, Van Buren County
Trails Association, Van Buren
County Conservation.
Date prepared: 10-28-20



Section Six: Trails in Wapello County

Wapello County has a population of 35,625 people according to the 2010 US Census. The county seat and largest city is Ottumwa, which has a population of 25,023. The county is made up of six other cities in addition to Ottumwa. The geography of the county is dominated by the Des Moines River that crosses diagonally from the northwest to the southeast. The river runs through the cities of Eddyville, Chillicothe, Ottumwa, and Eldon.

The Wapello County Trails Council is a non-profit community organization that was formed in 2006 to create a trail system in Wapello County. The council's original goal was to construct trails on the levees along both sides of the Des Moines River in Ottumwa. This goal was completed in 2014. Another project of the council was to convert the Wabash Railroad Bridge into a pedestrian walkway. This was completed with volunteer help to re-deck the bridge and install fencing, creating a unique walkway over the Des Moines River. Their most recent project was an underpass under Highway 34 that connects the levee trail with Ottumwa Park. This was completed in 2016.

The Eldon Trail Committee was formed in 2006 with the purpose to develop, preserve, promote and maintain trails in Eldon. The committee's first project was to construct a trail from Elm Street to the Des Moines River to 7th Street. The Eldon Trail Committee's current project is to develop a trail through the Wapello County Fairgrounds.

For more information:

Wapello County Trails Council.
www.wapellocountytrails.com

Wapello County Conservation Board.
wapellocounty.org/departments/conservation-board/
wapelloccb@netins.com
(641) 682-3091

Ottumwa Park Department.
www.cityofottumwa.com/departments/parks-and-recreation/
(641) 682-7873

Regional Transportation Enhancement and Transportation Alternative Program awards:

1997	Eldon Gothic Park - \$74,184
1997	Ottumwa Lagoon Trail - \$132,089
2002	Market St to Quincy Av Trail - \$85,857
2007	Market St to Vine St Trail - \$38,735
2008	Gray Eagle Extension - \$161,451
2009	South Loop Trail - \$163,640
2010	Iowa Av to City Limits Trail - \$131,654
2018	American Gothic Trail - \$185,000

Existing Trails

Eldon Gothic Trail:

- Maintained by: City of Eldon, Eldon Trails Committee and the Masons.
- Length: 1 ½ miles.
- Surface type: Asphalt and Concrete.
- Notable features: Bridge over Chippewa Creek, Des Moines River and Des Moines River overlook.
- Connections: Eldon Main Street, American Gothic House and American Gothic House Center.



A trailhead for the Eldon Gothic Trail is located at the American Gothic House and American Gothic House Center.



The trail runs through this open space which includes benches and a disc golf course.



Part of the Eldon Gothic Trail along the Des Moines River, south of the downtown.

Ottumwa Trail System:

- Maintained by: City of Ottumwa.
- Length: 16 miles.
- Surface type: Most of the trail is paved, one segment is gravel.
- Notable features: Des Moines River and the Wabash Bridge.
- Connections: Union Park, Ottumwa Park, The Beach Ottumwa Water Park and Gray Eagle Wildlife Preserve.



Most of the Ottumwa Trail System runs on top of the levees on the north and south banks of the Des Moines River.

Dahlongega and Bladensburg Bike Routes:

- Maintained by: Wapello County Secondary Road Department.
- Length: 6 mile inner loop and a 17 mile outer loop.
- Surface type: Paved roadway.
- Notable features: Dahlongega School House.
- Connections: Indian Hills Community College.

Lower Des Moines River Water Trail:

- Maintained by: Wapello County Conservation Board and access point managers.
- Length: 3 miles in Wapello County.
- Access points: Eldon ramp.



Parks on the Trail System

Union Park:

- Maintained by: City of Ottumwa.
- Size: 23 acres.
- Amenities: Picnic area, shelter, playground, Midwest Little League baseball fields, basketball and tennis courts.

The Wabash Railroad Bridge was converted to a trail bridge and now connects the levee trails across the Des Moines River.

Memorial Park:

- Maintained by: City of Ottumwa.
- Size: 47 acres.
- Amenities: Cabin, shelter, picnic area, playground, disc golf course, mountain bike trail, ponds and hiking trail.



Ottumwa Park:

- Maintained by: City of Ottumwa.
- Size: 340 acres.
- Amenities: Picnic shelters, camping, fishing ponds, horse arena, dog park, softball/baseball fields, football fields, soccer fields, basketball and tennis courts.



Gray Eagle Wildlife Reserve:

- Maintained by: Wapello County Conservation Board.
- Size: 142 acres.
- Amenities: Hiking trail and fishing.



Ottumwa Park is located in the center of the city and provides space for active and passive recreation activities. The area includes trails, exercise equipment, shelters and playgrounds.

Future Improvements

Trails:

- Paving the trail along the north levee from Turkey Island to Union Park.
- Connecting to Turkey Island.
- Constructing the Oxbow Trail from Ferry Street and the Greater Ottumwa Park around the outside of the oxbow lagoon to Church Street.
- Constructing the Milner Neighborhood Trail from Mary Street to Church Street.
- Paving the levee west of Iowa Ave from Iowa Ave to the existing trail.
- Constructing the American Gothic Connector from the Des Moines River, through the Wapello County Fairground, to the American Gothic House.
- Connecting Ottumwa to Eldon as part of the American Gothic Trail.
- Connecting Eldon to the Jefferson County Trails.



This trail segment to Union Park is the most recent expansion of the Ottumwa Trail System. Future plans include replacing the gravel with a paved surface.

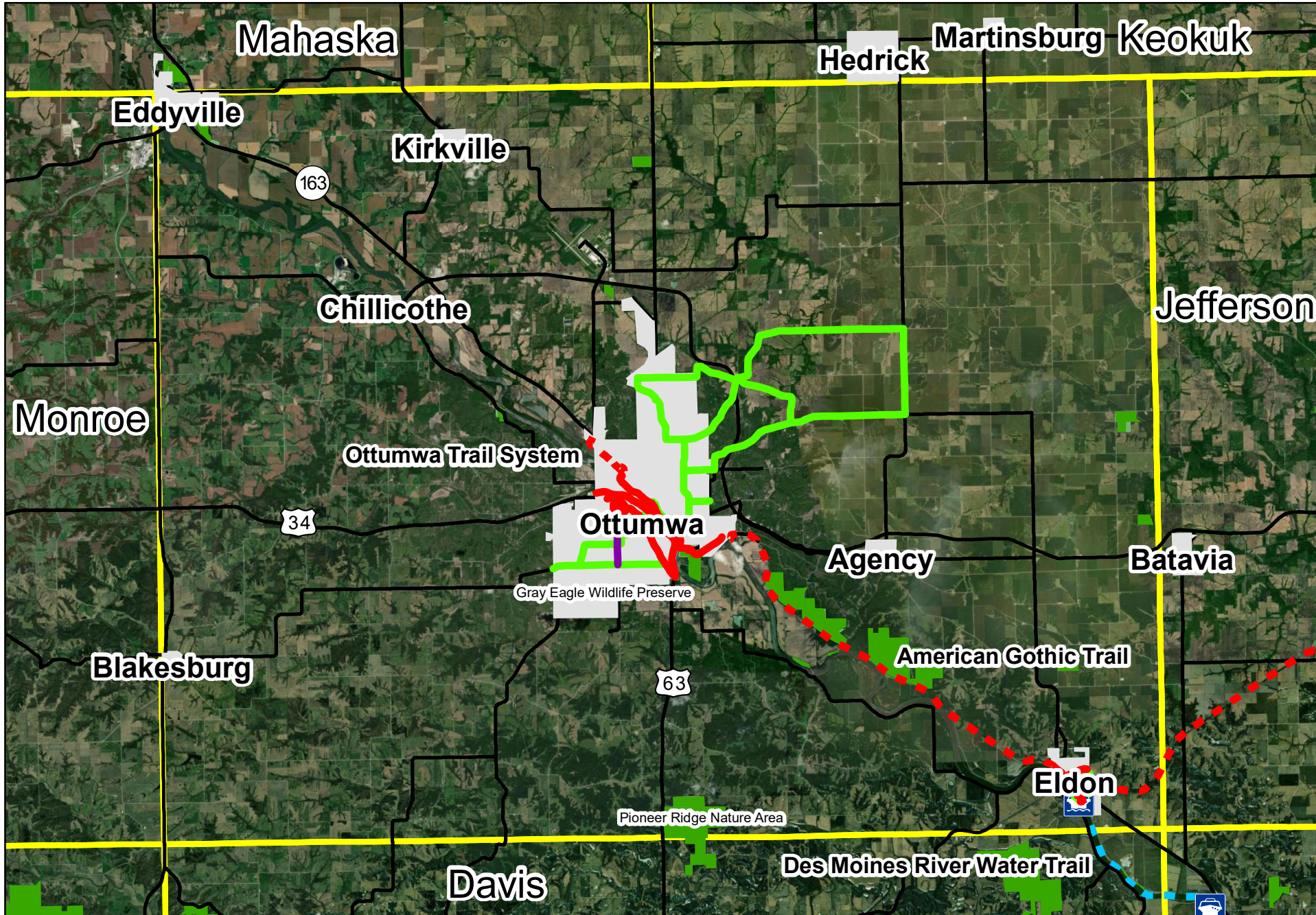
Trail Enhancements:

- Enhanced trailheads at Quincy Av, Wayside Park, The Beach, Wabash Bridge and Gray Eagle.
- Benches, bike racks, informational kiosks and water fountains along the trails.

Other

- Developing a implementation plan for reimagining/redeveloping Greater Ottumwa Park. A copy of the concept plan is included on page 44.

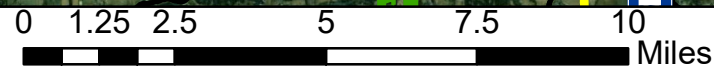
Wapello County Bicycle and Pedestrian Facilities



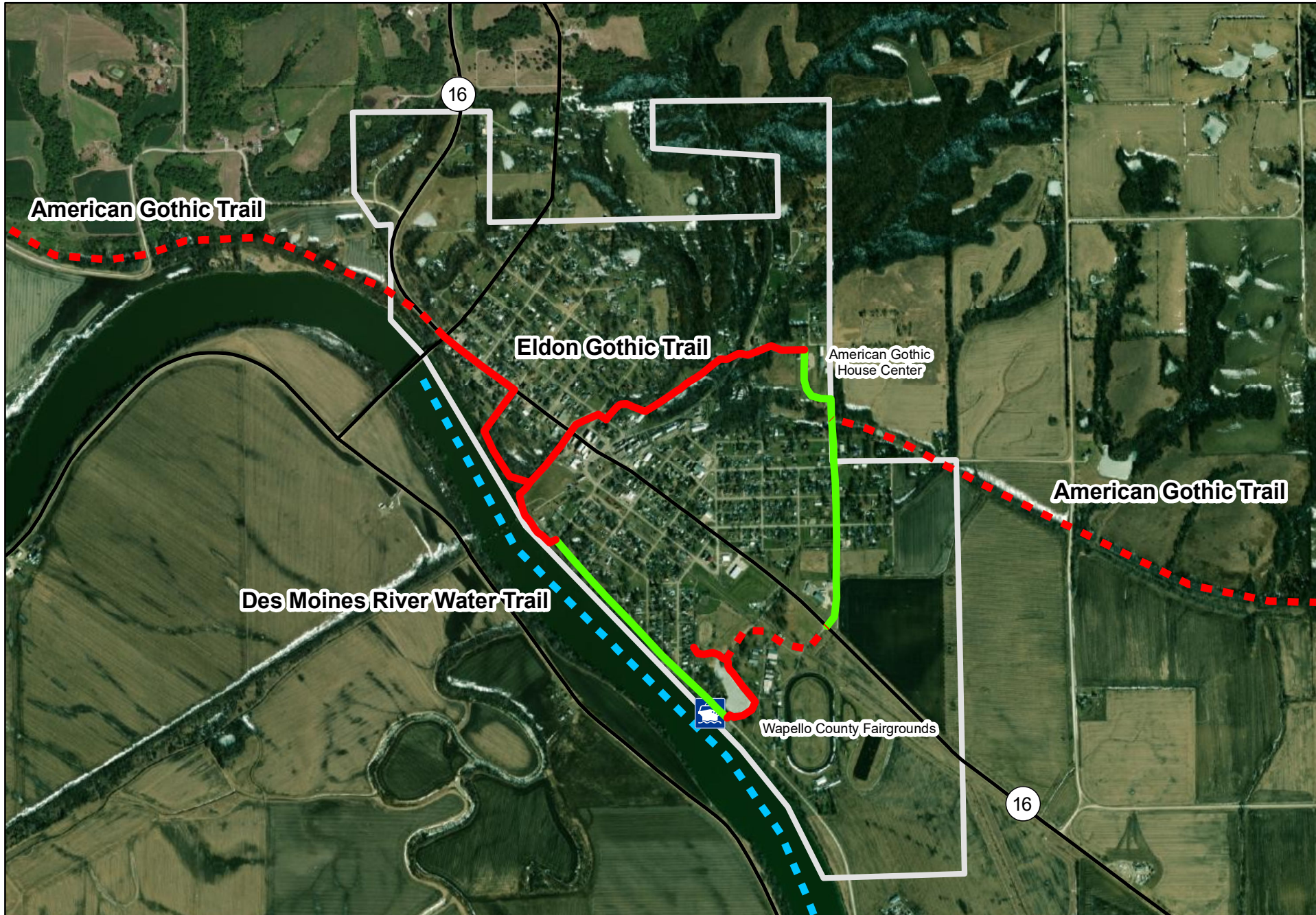
Legend

- Existing Trails
- - - Proposed Trails
- Existing Sidepath
- Signed Routes
-  Water trail access
-  Cities
- - - Water Trails
- Parks/Natural Areas
- Counties

Map prepared by the Area 15 Regional Planning Commission
 Sources: ESRI, Iowa DOT, Iowa DNR, Wapello County Trails Council, Wapello County Conservation.
 Date prepared: 10-30-20



City of Eldon Bicycle and Pedestrian Facilities

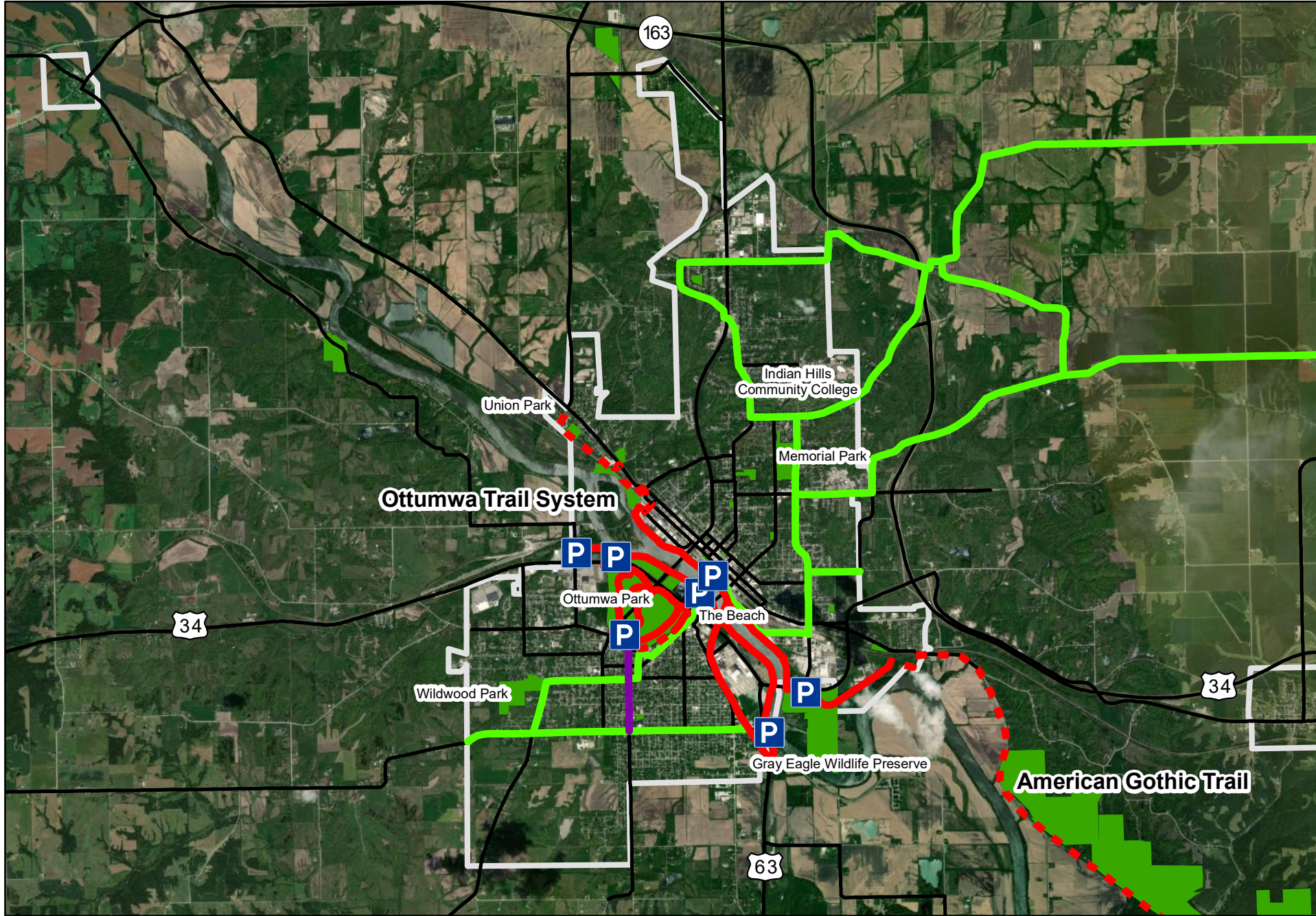


Legend

- Existing Trails
- Proposed Trails
- Signed Routes
- Water trail access
- Water Trails
- Parks/Natural Areas
- Cities
- Counties

Map prepared by the Area 15 Regional Planning Commission
Sources: ESRI, Iowa DOT, Iowa DNR, Wapello County Trails Council, Wapello County Conservation.
Date prepared: 10-30-20

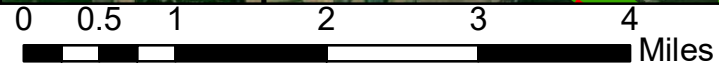
City of Ottumwa Bicycle and Pedestrian Facilities



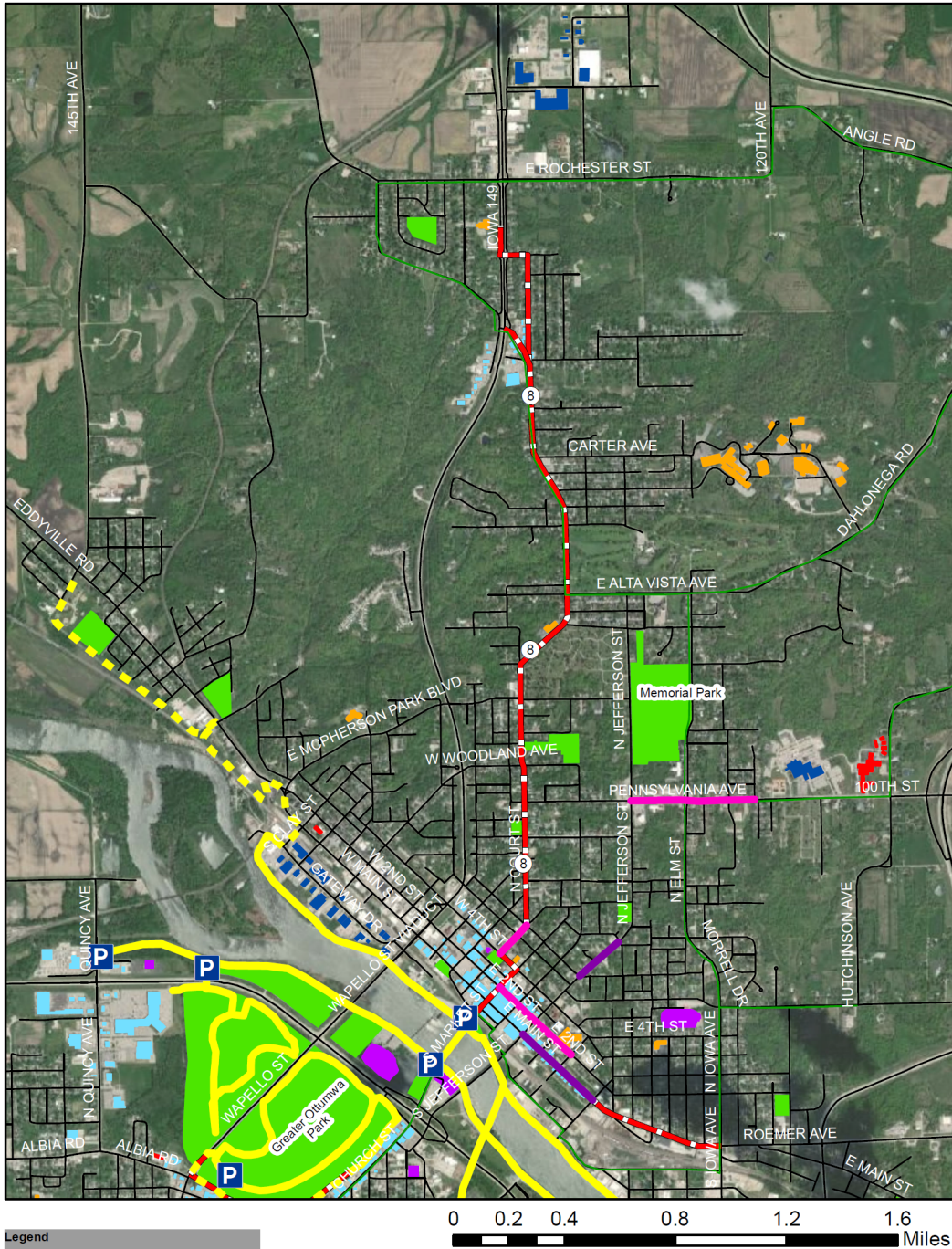
Legend

- P Trailheads/Parking
- Existing Trails
- Proposed Trails
- Existing Sidepath
- Signed Routes
- Water Trails
- Parks/Natural Areas
- Cities
- Counties

Map prepared by the Area 15
Regional Planning
Commission
Sources: ESRI, Iowa DOT,
Iowa DNR, Wapello County,
Wapello County
Conservation.
Date Prepared: 10-30-20



Priority 1 Corridors - North Side



Legend

- 8ft Sidepath
- 6ft Sidewalk
- Trailheads/Parking
- Existing Trails
- Proposed Trails
- Existing Sidepath
- Existing Sidewalks
- Signed Routes
- Priority 1 Corridor
- High Density Housing
- Major Employers
- Schools
- Destinations
- Major Commercial Areas
- Parks

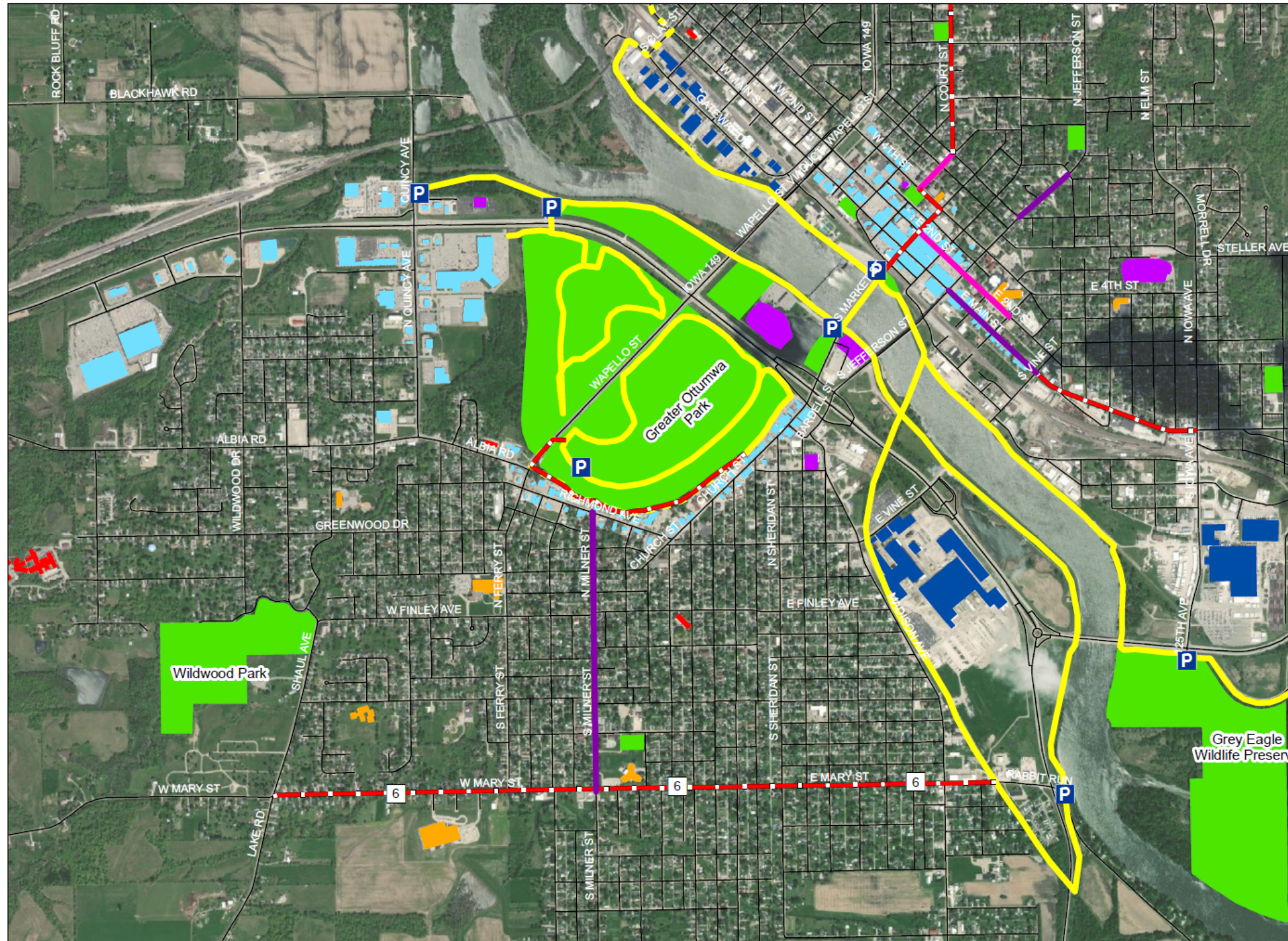


Map prepared by the Area 15 Regional Planning Commission
Sources: ESRI, Iowa DOT, Wapello County GIS, Wapello County Trails Council.
Date prepared: 11-02-20

Ottumwa Bicycle and Pedestrian Plan

Pathways to Healthy Neighborhoods

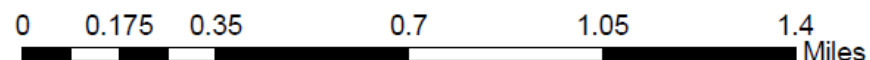
Priority 1 Corridors - South Side



Legend

- ⊘ 8ft Sidepath
- ⊘ 6ft Sidewalk
- P Trailheads/Parking
- Existing Sidepath
- - - Priority 1 corridor
- Existing Trails
- - - Proposed Trails
- Existing Sidewalk
- High Density Housing
- Major Employers
- Schools
- Destinations
- Major Commercial Areas
- Parks

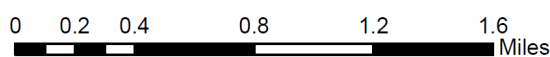
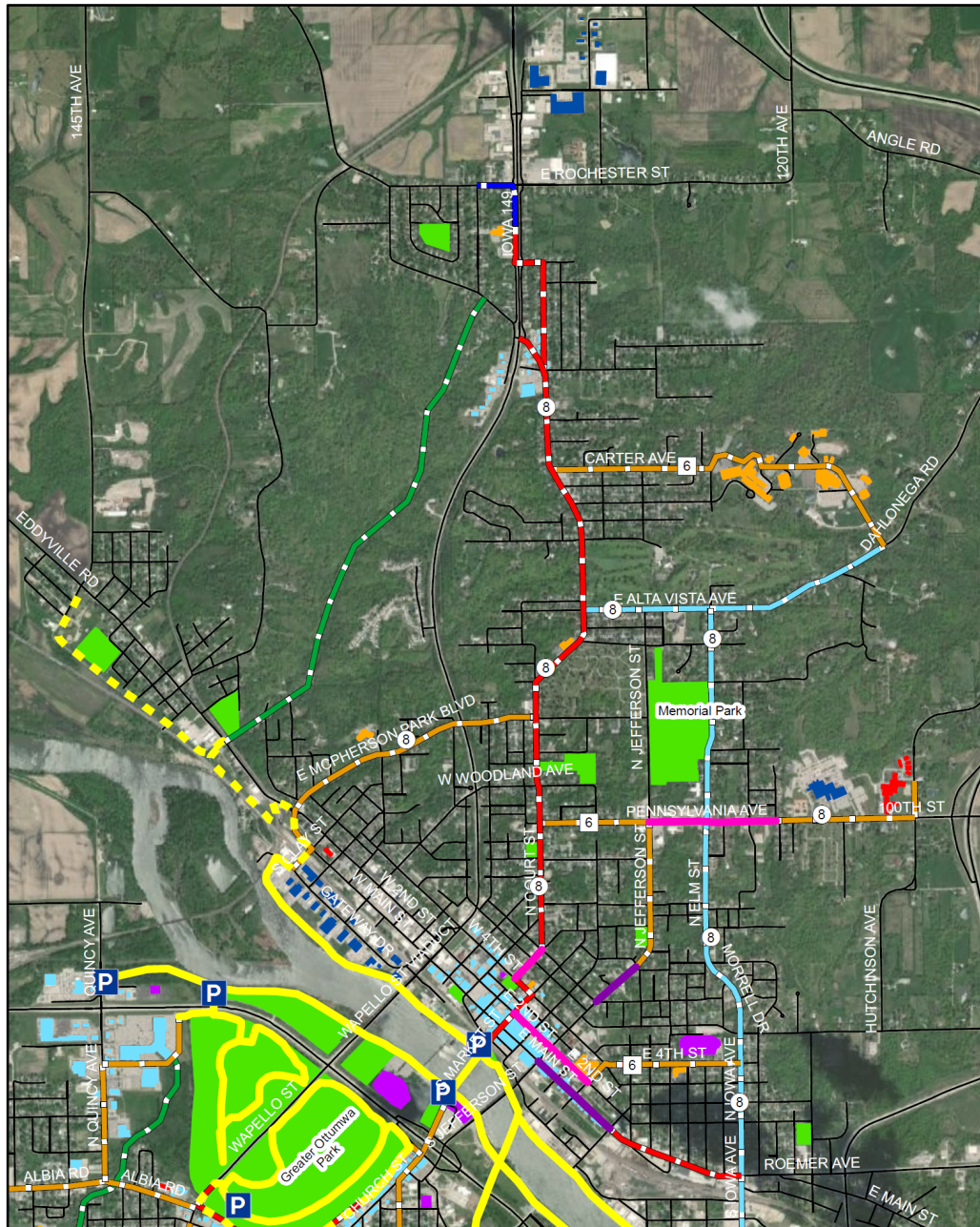
Map prepared by the Area 15 Regional Planning Commission
Sources: ESRI, Iowa DOT, Wapello County GIS, Wapello County Trails Council.
Date prepared: 11-03-20



Ottumwa Bicycle and Pedestrian Plan

Pathways to Healthy Neighborhoods

All Corridors - North Side



Legend	
	Priority 3 Corridor
	Priority 4 Corridor
	Scenic Corridor
	High Density Housing
	Major Employers
	Schools
	Destinations
	Major Commercial Areas
	Parks



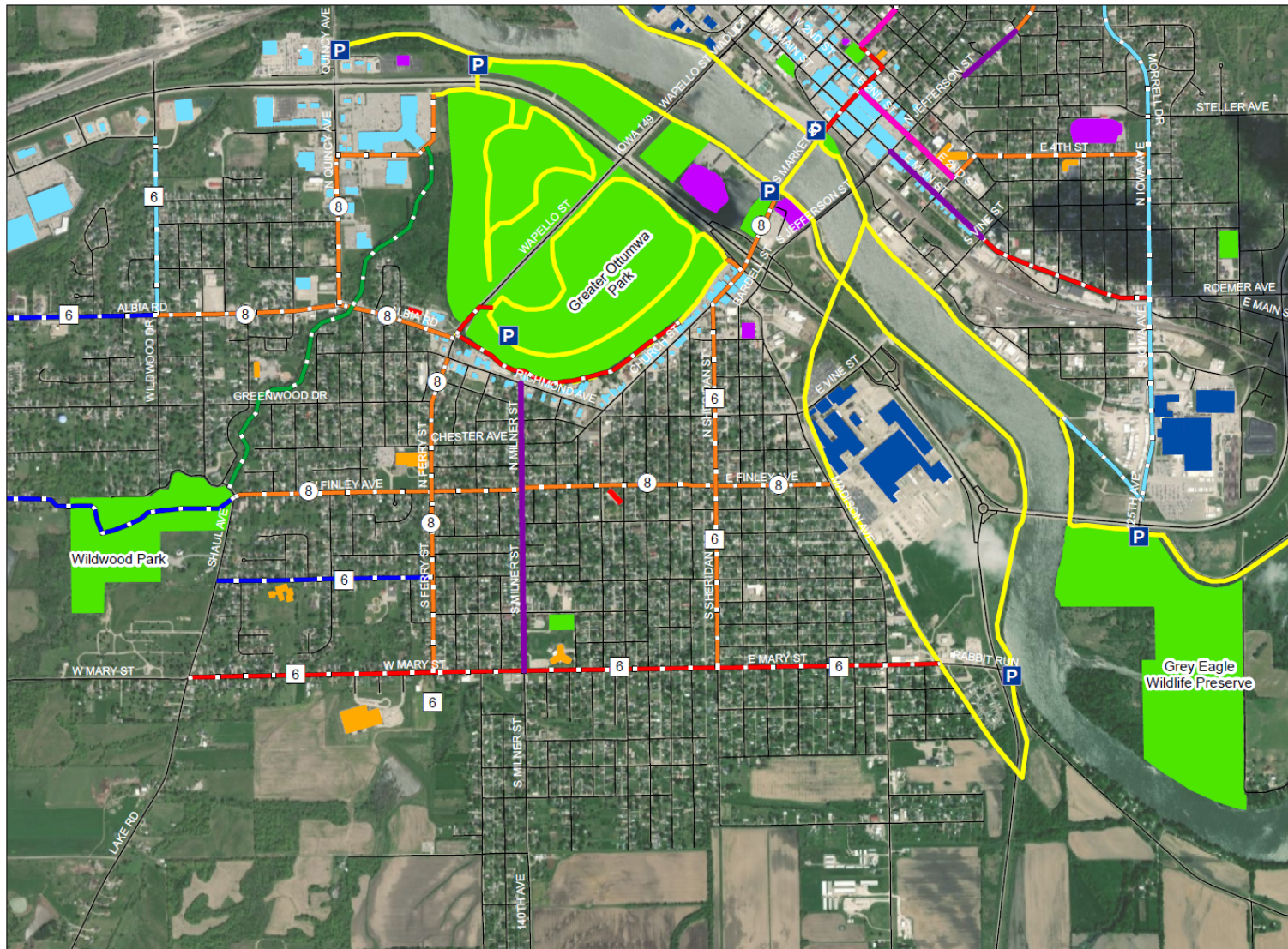
Map prepared by the Area 15 Regional Planning Commission
Sources: ESRI, Iowa DOT, Wapello County GIS, Wapello County Trails Council.
Date prepared: 11-03-20



Ottumwa Bicycle and Pedestrian Plan

Pathways to Healthy Neighborhoods

All Corridors - South Side



Legend

- 8 8ft Sidewalk
- 6 6ft Sidewalk
- P Trailheads/Parking
- Scenic Corridor
- Priority 4 Corridor
- Priority 3 Corridor
- Priority 2 Corridor
- Priority 1 corridor
- Existing Sidewalk
- Existing Sidewalk
- Existing Trails
- Proposed Trails
- High Density Housing
- Major Employers
- Schools
- Destinations
- Major Commercial Areas
- Parks

0 0.175 0.35 0.7 1.05 1.4 Miles

Map prepared by the Area 15 Regional Planning Commission
 Sources: ESRI, Iowa DOT, Wapello County GIS, Wapello County Trails Council.
 Date prepared: 11-02-20



Figure 5.8 - Ottumwa Park Reimagined

Section Seven: Regional Trails and Connections

Trails considered as regional connect more than one city and/or county within Regional Planning Affiliation 15 or connect a cities/counties within the RPA with cities/counties in the surrounding area. Regional trails can serve as destinations for local trails and connect multiple local trails, improving the overall trail system. In an effort to identify potential trail connections to cities and counties outside of RPA 15, organizations involved in trail planning and development for the surrounding area were contacted regarding their maps or plans showing existing and proposed trails. Information obtained from these organizations was reviewed to determine potential connectivity and regional trail development.

Organizations contacted and documents reviewed:

RPA 6 (Poweshiek County)
2013 trail map

RPA 10 (Iowa and Washington counties)
2011 trail plan

RPA 16 (Henry and Lee counties)
2018 transportation and development plan

RPA 17 (Monroe and Davis counties)
2017 trail plan

RPA 11 (Marion and Jasper counties)
Map from 2014 long-range transportation plan

Iowa Department of Transportation
Bicycle and Pedestrian Long Range Plan

U.S. Army Corps of Engineers
2015 Lake Red Rock Master Plan

Iowa Natural Heritage Foundation
No plan, relies on MPO and RPA plans.

Existing and Planned Regional Trails in RPA 15

Lower Des Moines River Water Trail:

- Length: 44 miles.
- Location: Between Eldon in Wapello County and Farmington in Van Buren County.
- Details: See Section Five: Trails in Van Buren County and Section Six: Trails in Wapello County for information on the trail in each county.



Paddlers learning about the history of the Des Moines River approach an old lockkeeper's house.

Skunk River Water Trail:

- Length: 72 miles.
- Location: Between the South Skunk River Access (6.5 miles S of Sigourney) in Keokuk County and Oakland Mills Park (4 miles southwest of Mt Pleasant) in Henry County. Flows through Keokuk, Washington, Jefferson and Henry counties.
- Details: See Section Two: Trails in Jefferson County and Section Three: Trails in Keokuk County for information on the trail in each county.



Boat ramps such as the one at MacCoon Access in Jefferson County are required for water trails.

Kewash Trail:

- Length: 14 miles.
- Location: Connects Keota in Keokuk County with West Chester and Washington in Washington County.
- Details: See Section Three: Trails in Keokuk County.



The Kewash Trail connects two counties and three cities.

American Gothic Trail:

- Length: 24.27 miles.
- Location: Will connect Ottumwa and Eldon in Wapello County with Libertyville and Fairfield in Jefferson County.
- Details: Currently efforts are underway to obtain easements and secure funding to develop the trail between Ottumwa and Eldon.

Future Connections

- Pella/Lake Red Rock and Oskaloosa: connecting the Volksweg Trail and the Mahaska Community Recreation Trail.
- Oskaloosa, Eddyville and Ottumwa: connecting the Mahaska Community Recreation Trail, Ottumwa Trail System and the American Gothic Trail.
- Sigourney and Keota: connecting the Belva Deer Trail and the Kewash Trail.
- Eldon and Keosauqua: connecting the Eldon Gothic Trail, American Gothic Trail, Keosauqua Loop Trail and Riverfront Trail.
- Oskaloosa and Sigourney.
- Keosauqua and Farmington/Shimek State Forest.
- Belva Deer Recreation Area and Lake Darling State Park.

Insert map showing trails of the RPA and surrounding area.

Section Eight: Priorities and Strategies for Future Investment

RPA 15 has several strengths and weaknesses relating to its trail development. Future trail development should capitalize on the strengths and address the deficiencies. One of the strengths is that four of the five counties have active trail groups. There are trails groups in Jefferson, Mahaska, Van Buren, and Wapello counties and these are the counties that have had the most success in developing trails. Within these counties, there are seven cities that have trails; Cantril, Eldon, Fairfield, Keosauqua, Milton, Oskaloosa, and Ottumwa. There is also local investment in the trails; cities have allocated funding to construct trails and trails groups have raised money through donations and fundraisers. These actions provide match for federal and state grants and show local commitment to the granting agencies.

The primary weakness of the trails development is that there have been no connections between local trails. There is no trail through the region or part of the region. There are communities within the region that have been active or interested in trails development that are relatively close. A trail between two cities, or between a community and a nearby park would make a good long distance trail. There is a plan to develop a regional trail, the American Gothic Trail, from Ottumwa, to Eldon, and to Fairfield. However development has been slow due to the difficulties obtaining easements from landowners and the need for funding.

The following priorities and strategies have been identified for improving bicycle and pedestrian trails in Regional Planning Affiliation 15. These priorities are based on a review of previous trails plans, the Long-Range Transportation Plan, and meetings with trails group representatives and county conservation directors. Project applications for regional Transportation Alternative Program funds should be identified within section two of this plan or address the priorities and strategies identified below.

1. Priority: Expand and Improve access to trails.

Strategies:

- Create links from existing trails to neighborhoods without trail access.
- Plan trails that will connect residential areas with activity or entertainment centers.
- Provide trailheads that include parking, shelters, and benches accessible by users of all levels of ability.

2. Priority: Develop a regional trail system.

Strategies:

- Develop trails that link communities together or communities to parks, recreation areas, or other trails.
- Coordinate projects that benefit or impact multiple entities with other cities, counties, the RPA, and the Iowa DOT.

3. Priority: Develop safe trails and improve the safety of existing trails.

Strategies:

- Provide separation between trails or bike lanes and vehicle lanes in high traffic and high accident areas.
- Mark and sign areas where a trail and road cross, use signals, or construct an underpass or overpass.
- Install mileage markers and directional or informational signage to help trail users know their location.

Section Nine: Grants for Trails

According to the Iowa Department of Transportation's Bicycle and Pedestrian Long-Range Plan, which was completed in 2018, the average cost for a mile of new paved trail is \$400,000. This average is based on an analysis of construction costs of past projects. The cost can vary considerably though depending on the following factors; whether the trail uses a former railroad grade, type of terrain, if it is along a stream, and if it is in a densely populated area. Because of the cost and the availability of funding, constructing a trail may involve several funding sources and/or constructing it in phases as funding is obtained.

Federal and State Transportation Grants

Federal Recreational Trails Program:

- Awarding Agency: Iowa Department of Transportation
- Match Requirement: Minimum of 20%.
- Eligible Activities: Construction of trails, trail facilities, and linkages, acquisition of easements or property for trails and operation of educational programs related to trail environmental protection and safety.
- Website: https://iowadot.gov/systems_planning/Grant-Programs/-Federal-and-State-Recreational-Trails
- Application Deadline: October 1st.

State Recreational Trails Program:

- Awarding Agency: Iowa Department of Transportation.
- Match Requirement: Minimum of 25%.
- Eligible Activities: Construction of trails and trail improvements and land acquisition for trails.
- Website: https://iowadot.gov/systems_planning/Grant-Programs/-Federal-and-State-Recreational-Trails
- Application Deadline: July 1st.

Regional Transportation Alternatives Program:

- Awarding Agency: Regional Planning Affiliation 15.
- Match Requirement: Minimum of 20%.

- Eligible Activities: Construction of trails, sidewalks, bicycle and pedestrian infrastructure.
- Website: <https://www.area15rpc.com/transportation-alternatives-program-1>
- Application Deadline: April 1st.

Other Federal and State Grants

Resource Enhancement and Protection Program:

- Awarding Agency: Iowa Department of Natural Resources.
- Match Requirement: No local match required.
- Eligible Activities: Construction of trails, acquisition of easements or property for trails.
- Website: <https://www.iowadnr.gov/Conservation/REAP/REAP-Grants>
- Application Deadline: August 15th.

Land and Water Conservation Fund:

- Awarding Agency: Iowa Department of Natural Resources.
- Match Requirement: Minimum of 50%.
- Eligible Activities: Observation and sightseeing trails, trail support facilities.
- Website: <https://www.iowadnr.gov/About-DNR/Grants-Other-Funding/Land-Water-Conservation-Fund>
- Application Deadline: March 15th.

Community Attraction and Tourism Program:

- Awarding Agency: Iowa Economic Development.
- Match Requirement: At least 65% of project funds must be already raised.
- Eligible Activities: Construction of recreational trails.
- Website: <https://www.iowaeconomicdevelopment.com/Enhancelowa>
- Application Deadline: Quarterly, see website for details.

Local and Private Organization Grants

PeopleforBikes Community Grant Program:

- Awarding Agency: PeopleforBikes.
- Match Requirement: See website for details.

- Eligible Activities: Construction of bike trails, paths, lanes, and bridges, BMX and mountain bike facilities, bicycle infrastructure.
- Website: <https://peopleforbikes.org/our-work/community-grants/>
- Application Deadline: See website for details.

Wellmark MATCH Grant Program:

- Awarding Agency: Wellmark.
- Match Requirement: 1 for 1 for large MATCH, 50% for small MATCH.
- Eligible Activities: Construction of trails, sidewalk connections, bike lanes, bicycle infrastructure, acquisition of trail corridors.
- Website: <https://www.wellmark.com/foundation/traditional-grants.html>
- Application Deadline: Large MATCH due in February, small MATCH due in June.

Greater Jefferson County Foundation Grant:

- Awarding Agency: Greater Jefferson County Foundation.
- Match Requirement: No local match required.
- Eligible Activities: Projects that benefit the residents of Jefferson County.
- Website: <https://www.greaterjeffersoncountyfoundation.org/grants>
- Application Deadline: July 1st.

Mahaska County Community Foundation Grant:

- Awarding Agency: Mahaska County Community Foundation.
- Match Requirement: No local match required.
- Eligible Activities: Projects that benefit Mahaska County communities and organizations.
- Website: <http://www.mahaskafoundation.org/>
- Application Deadline: See website for details.

Bright Ideas Community Enrichment Fund:

- Awarding Agency: Ottumwa Regional Legacy Foundation
- Match Requirement: See website for details.
- Eligible Activities: Projects that enrich the quality of life for residents of Ottumwa and Wapello County.
- Website: <https://www.orf.org/for-grantees-scholars/bright-ideas-community-enrichment-fund/>
- Application Deadline: See website for details.

